



AMR/AGV- 7 Shock Absorbing Caster (Medium Duty)

W Resolute (Pearlescent dark gray) Wheel Diameter × Wheel Width 125 x 31mm

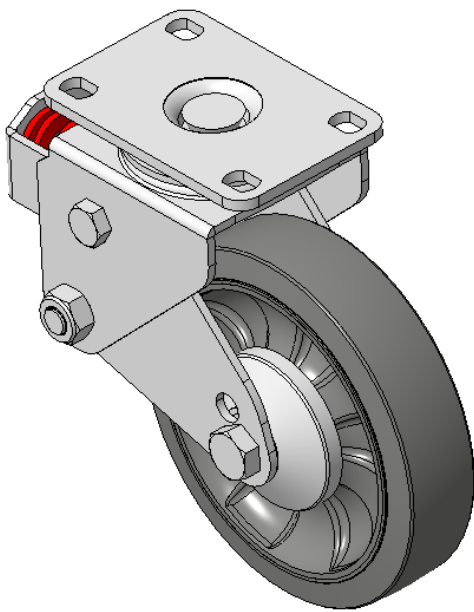
EAN

KS-11650507452113

Spring-loaded Caster with Welded Caster Fork Zine-Plated, Mounting Type - Top Plate, 75x45 Bolt Hole Spacing Cast Iron Wheel Center with High Quality Polyurethane tread Pearl-finish dark gray, Bearing—Ball Bearing

Wheel tread: Made of high-quality polyurethane
Wheel Center: iron core/cast iron

Drawings are for reference only and may differ from the product



Picture may differ from original product

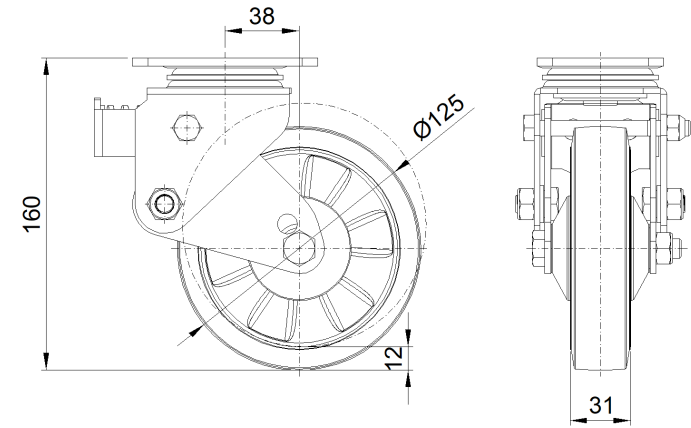
Technical Data

| | |
|--|---------------------------|
| <input checked="" type="radio"/> Imperial <input type="radio"/> Metric | |
| Wheel Diameter | 5 " |
| Wheel Width | 1-1/4 " |
| Wheel Bearing | Wheels With Ball Bearings |
| Plate Size | 3-13/16 " x 2-9/16 " |
| Bolt Hole Spacing | 3 " x 1-13/16 " |
| Plate Hole | 1/2 " x 23/64 " |
| Offset | 1-1/2 " |
| Swivel Interference | 8-3/16 " |
| Overall Height | 6-3/8 " |
| Swivel Radius | 4-1/16 " |
| Hardness Of Tread | 72±5° Shore A |
| Load Capacity (Dynamic) | 276lbs |
| Load Capacity (Static) | 413lbs |
| Temperature | -4°F to +140°F |
| Fork Type | Swivel Caster |
| Stainless | N/A |
| Electrical Conductivity | N/A |
| Anti-Static | N/A |
| Weight | 3.5lbs |
| Standard | ISO22883 |

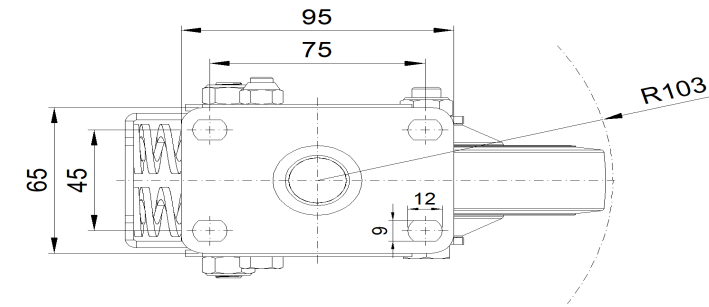
Advantages at a glance

| | |
|----------------------------|-----------|
| Rolling Resistance | ● ● ● ● ● |
| Operating Noise | ● ● ● ● ● |
| Floor Surface Preservation | ● ● ● ● ● |

Dimensions



Mounting



* For any deviation between metric and imperial spec, please refer to the metric spec.