



1165-2 Heavy Duty AMR/AGV-2 Caster Series

MC Nylon (beige) Wheel Diameter x Wheel Width 80 x 35mm

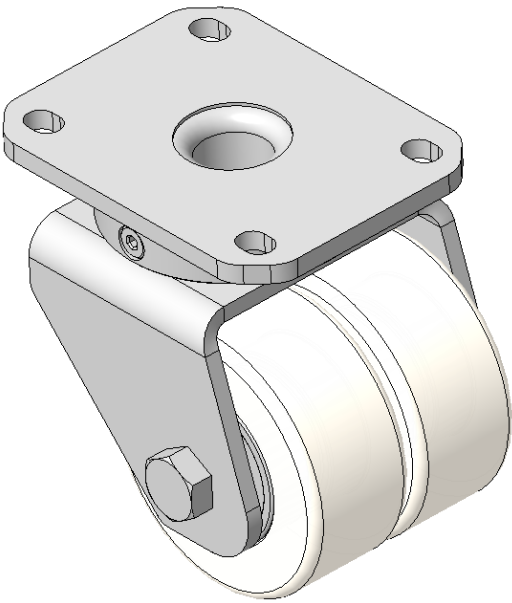
EAN

KS-11652302072013

Swivel Caster, Welded Caster Fork Zine-Plated, Mounting Type - Top Plate, 80 x 60 Bolt Hole Spacing Reinforced Polypropylene, off-white wheel tread Bearing - Ball Bearing

Wheel tread: Made of thermoplastic
Wheel Center: Thermoplastic wheel core

Drawings are for reference only and may differ from the product



Picture may differ from original product

Technical Data

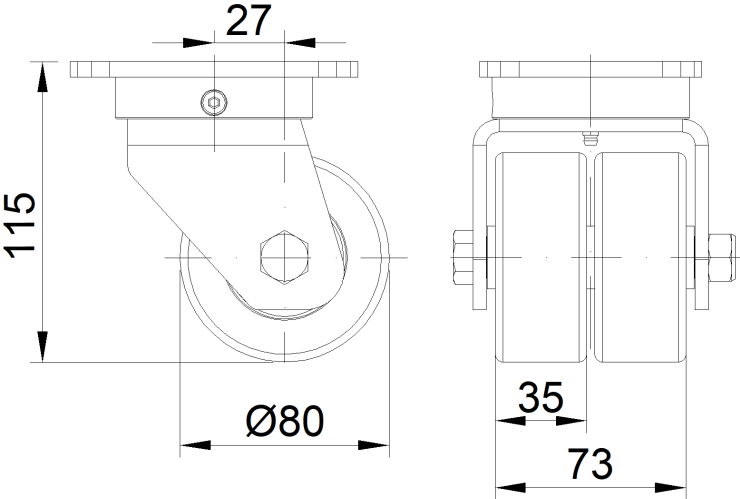
<input checked="" type="radio"/> Metric <input type="radio"/> Imperial	
Wheel Diameter	80mm
Wheel Width	73mm
Wheel Bearing	Wheels With Ball Bearings
Plate Size	110 x 85mm
Bolt Hole Spacing	80 x 60mm
Plate Hole	12 x 9mm
Offset	27mm
Swivel Interference	145mm
Overall Height	115mm
Swivel Radius	72.5mm
Hardness Of Tread	° Shore A
Load Capacity (Dynamic)	250kgs
Load Capacity (Static)	375kgs
Temperature	Fork Type

Swivel Caster	
Stainless	N/A
Electrical Conductivity	N/A
Anti-Static	N/A
Weight	2.16kgs
Standard	ISO22883

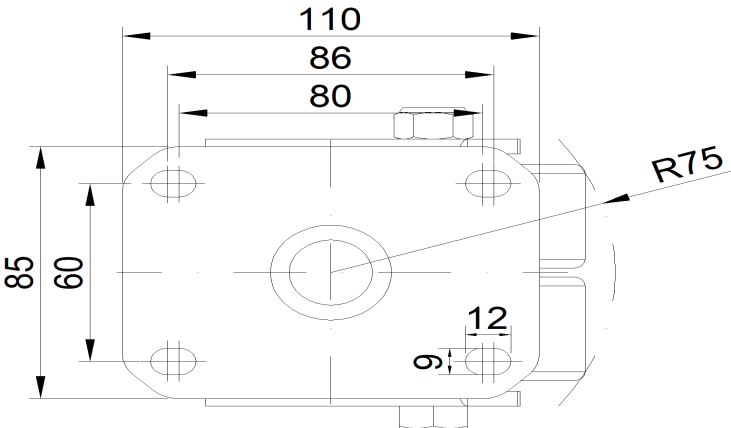
Advantages at a glance

Rolling Resistance	• • • • •
Operating Noise	• • • • •
Floor Surface Preservation	• • • • •

Dimensions



Mounting



* For any deviation between metric and imperial spec, please refer to the metric spec.