



1165-2 Heavy Duty AMR/AGV-2 Caster Series

MC Nylon (beige) Wheel Diameter x Wheel Width 80 x 35mm

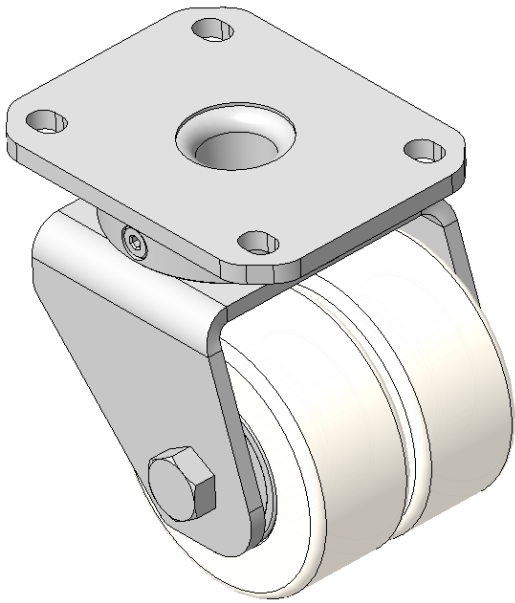
EAN

KS-11652302072013

Swivel Caster, Welded Caster Fork Zine-Plated, Mounting Type - Top Plate, 80 x 60 Bolt Hole Spacing Reinforced Polypropylene, off-white wheel tread Bearing - Ball Bearing

Wheel tread: Made of thermoplastic
Wheel Center: Thermoplastic wheel core

Drawings are for reference only and may differ from the product



Picture may differ from original product

Technical Data

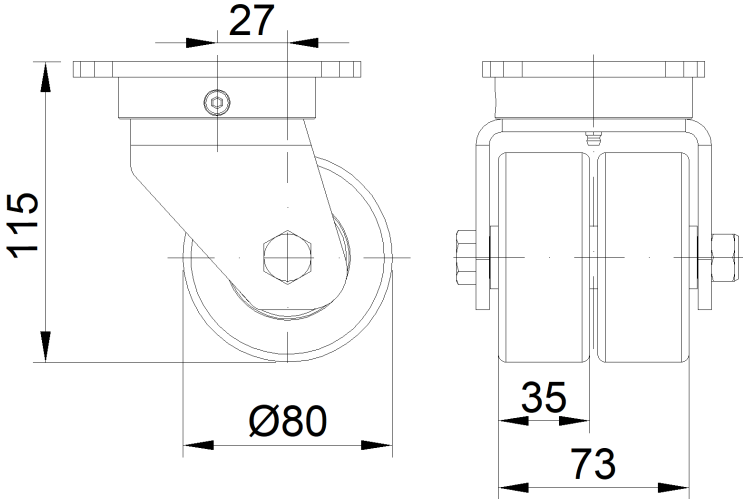
| | |
|--|---------------------------|
| <input checked="" type="radio"/> Imperial <input type="radio"/> Metric | |
| Wheel Diameter | 3-3/16 " |
| Wheel Width | 2-15/16 |
| Wheel Bearing | Wheels With Ball Bearings |
| Plate Size | 4-3/8 " x 3-7/16 " |
| Bolt Hole Spacing | 3-3/16 " x 2-7/16 " |
| Plate Hole | 1/2 " x 23/64 " |
| Offset | 1-1/16 " |
| Swivel Interference | 5-13/16 " |
| Overall Height | 4-9/16 " |
| Swivel Radius | 2-7/8 " |
| Hardness Of Tread | ° Shore A |
| Load Capacity (Dynamic) | 551lbs |
| Load Capacity (Static) | 827lbs |
| Temperature | Fork Type |

| | |
|-------------------------|----------|
| Swivel Caster | |
| Stainless | N/A |
| Electrical Conductivity | N/A |
| Anti-Static | N/A |
| Weight | 4.8lbs |
| Standard | ISO22883 |

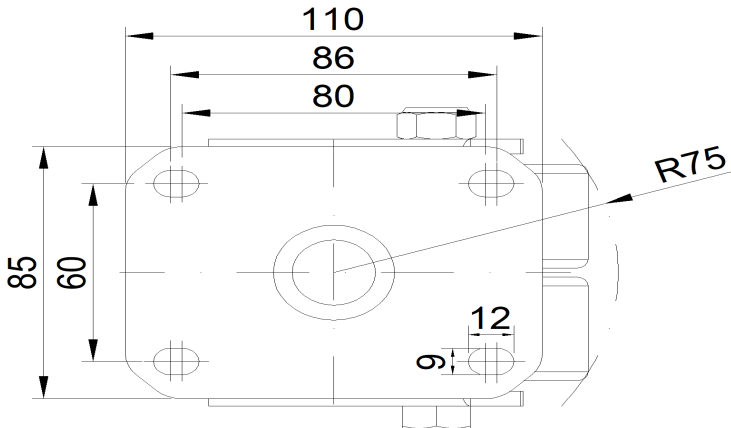
Advantages at a glance

| | |
|----------------------------|-----------|
| Rolling Resistance | • • • • • |
| Operating Noise | • • • • • |
| Floor Surface Preservation | • • • • • |

Dimensions



Mounting



* For any deviation between metric and imperial spec, please refer to the metric spec.