



1165-2 Heavy Duty AMR/AGV-2 Caster Series

MC Nylon (beige) Wheel Diameter x Wheel Width 80 x 35mm

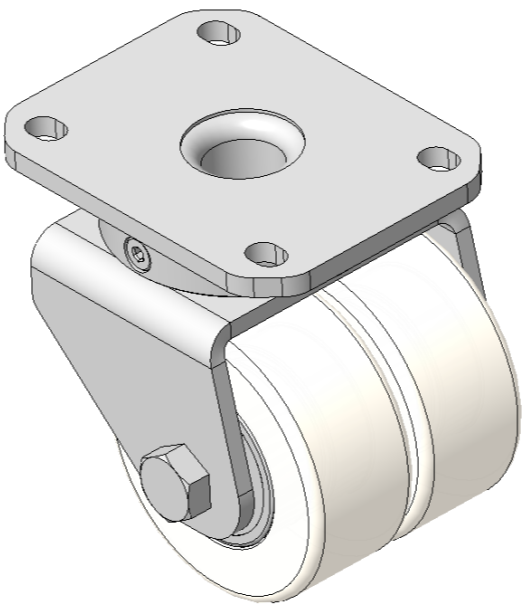
EAN

KS-11652302072023

Swivel Caster, Welded Caster Fork Zine-Plated, Mounting Type - Top Plate, 80 x 60 Bolt Hole Spacing Reinforced Polypropylene, off-white wheel tread Bearing - Ball Bearing

Wheel tread: Made of thermoplastic  
Wheel Center: Thermoplastic wheel core

Drawings are for reference only and may differ from the product



Picture may differ from original product

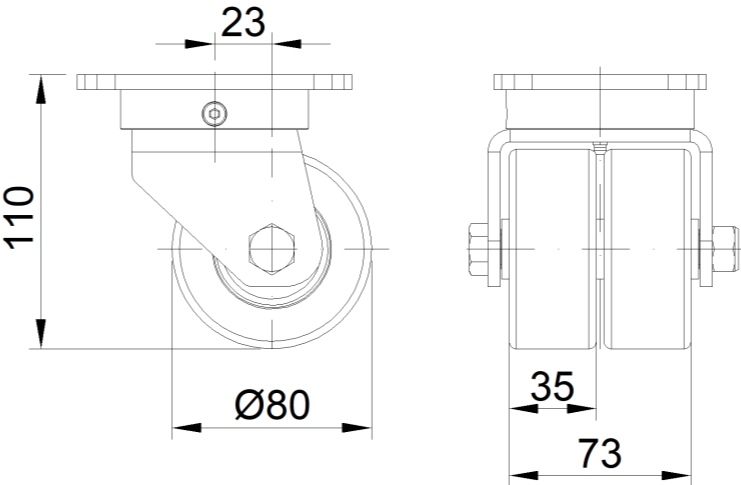
Technical Data

<input checked="" type="radio"/> Imperial <input type="radio"/> Metric	
Wheel Diameter	3-3/16 "
Wheel Width	2-15/16
Wheel Bearing	Wheels With Ball Bearings
Plate Size	4-3/8 " x 3-7/16 "
Bolt Hole Spacing	3-3/16 " x 2-7/16 "
Plate Hole	1/2 " x 23/64 "
Offset	15/16 "
Swivel Interference	5-13/16 "
Overall Height	4-3/8 "
Swivel Radius	2-7/8 "
Hardness Of Tread	75±5° Shore D
Load Capacity (Dynamic)	551lbs
Load Capacity (Static)	827lbs
Temperature	-4°F to +176°F
Fork Type	Swivel Caster
Stainless	N/A
Electrical Conductivity	N/A
Anti-Static	N/A
Weight	4.7lbs
Standard	ISO22883

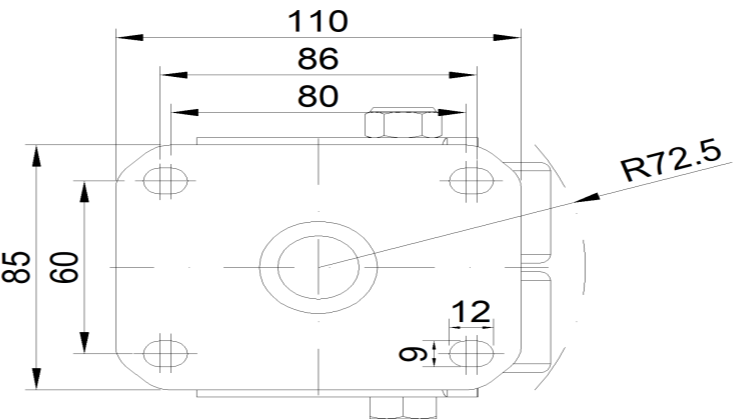
Advantages at a glance

Rolling Resistance	● ● ● ● ●
Operating Noise	● ● ○ ○ ○
Floor Surface Preservation	● ● ○ ○ ○

Dimensions



Mounting



\* For any deviation between metric and imperial spec, please refer to the metric spec.