

Product Information Sheet

1165-5 AMR/AGV- 5 Pressed Steel Caster - Single Wheel Series  
(Medium/Light Duty)



QPU (brown flat) Wheel Diameter x Wheel Width 80 x 35 mm

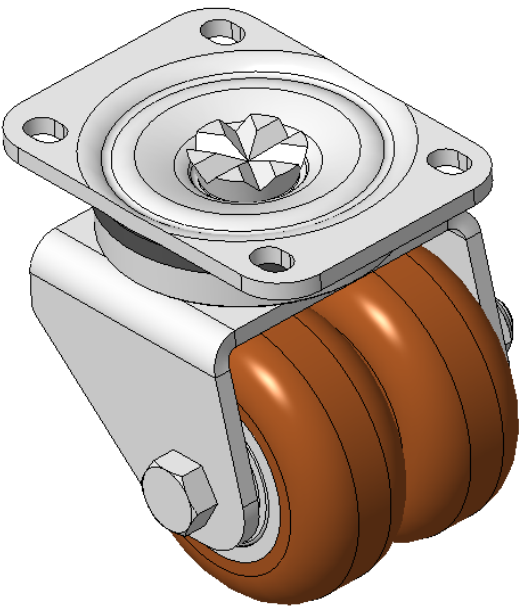
EAN

KS-11652305302343

Swivel Casters, Riveted and Stamping Top Plate—75 x 45 mm (3" x 1-3/4") Bolt Hole Spacing  
Electroplated surface, Mounting Type - Top Plate device, 80x60mm Bolt Hole Spacing  
Aluminum wheel center, High Quality Polyurethane Wheel Tread  
Cast Iron brown, Bearing—Ball Bearings

Wheel Tread: Hhigh-Quality Polyurethane  
Wheel Center: Iron core/cast iron

Drawings are for reference only and may differ from the product



Picture may differ from original product

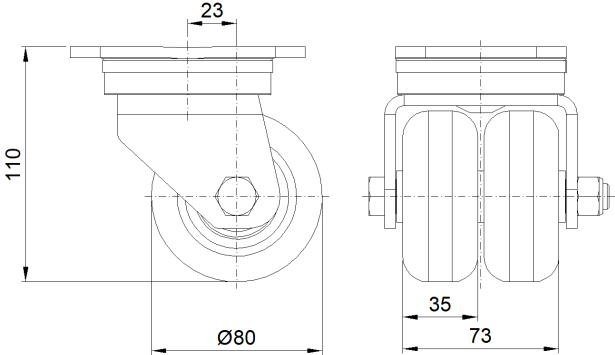
Technical Data

<input checked="" type="radio"/> Metric <input type="radio"/> Imperial	
Wheel Diameter	80mm
Wheel Width	73mm
Wheel Bearing	Wheels With Ball Bearings
Plate Size	110 x 80mm
Bolt Hole Spacing	80 x 60mm
Plate Hole	12 x 9mm
Offset	23mm
Swivel Interference	140mm
Overall Height	110mm
Swivel Radius	70mm
Hardness Of Tread	92±5° Shore A
Load Capacity (Dynamic)	300kgs
Load Capacity (Static)	450kgs
Temperature	-20°C to +70°C
Fork Type	Swivel Caster
Stainless	N/A
Electrical Conductivity	N/A
Anti-Static	N/A
Weight	2.46kgs
Standard	ISO22883

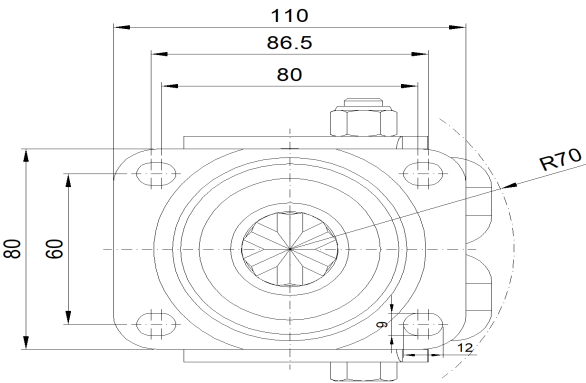
Advantages at a glance

Rolling Resistance	● ● ● ● ●
Operating Noise	● ● ● ● ●
Floor Surface Preservation	● ● ● ● ●

Dimensions



Mounting



\* For any deviation between metric and imperial spec, please refer to the metric spec.