

Product Information Sheet

1165-5 AMR/AGV- 5 Pressed Steel Caster - Single Wheel Series  
(Medium/Light Duty)



QPU (brown flat) Wheel Diameter x Wheel Width 80 x 35 mm

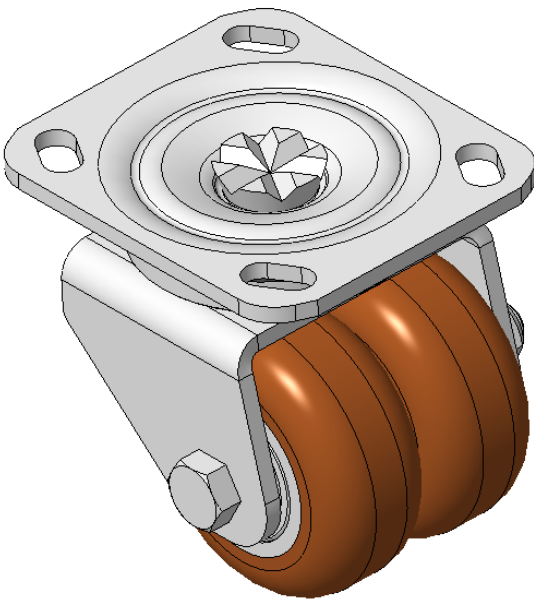
EAN

KS-11652305302353

Swivel Casters, Riveted and Stamping Top Plate—75 x 45 mm (3" x 1-3/4") Bolt Hole Spacing  
Electroplated surface, Mounting Type - Top Plate device, Bolt Hole Spacing 84x71.5  
Aluminum wheel center, High Quality Polyurethane Wheel Tread  
Cast Iron brown, Bearing—Ball Bearings

Wheel Tread: Hhigh-Quality Polyurethane  
Wheel Center: Iron core/cast iron

Drawings are for reference only and may differ from the product



Picture may differ from original product

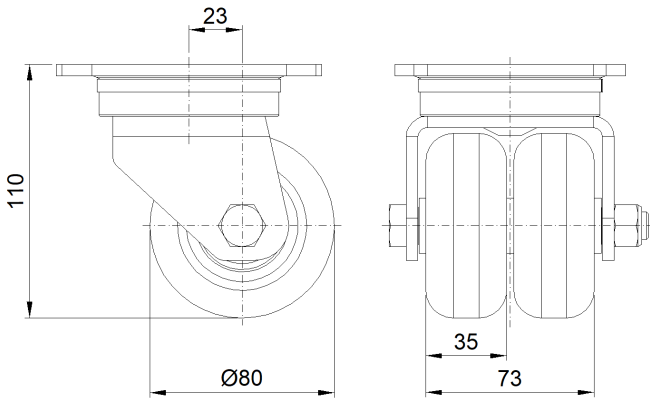
Technical Data

<input checked="" type="radio"/> Imperial <input type="radio"/> Metric	
Wheel Diameter	3-3/16 "
Wheel Width	2-15/16
Wheel Bearing	Wheels With Ball Bearings
Plate Size	4 " x 4-9/16 "
Bolt Hole Spacing	3-5/16 " x 2-13/16 "
Plate Hole	13/16 " x 3/8 "
Offset	15/16 "
Swivel Interference	5-9/16 "
Overall Height	4-3/8 "
Swivel Radius	2-13/16 "
Hardness Of Tread	92±5° Shore A
Load Capacity (Dynamic)	661lbs
Load Capacity (Static)	992lbs
Temperature	-4°F to +158°F
Fork Type	Swivel Caster
Stainless	N/A
Electrical Conductivity	N/A
Anti-Static	N/A
Weight	5.1lbs
Standard	ISO22883

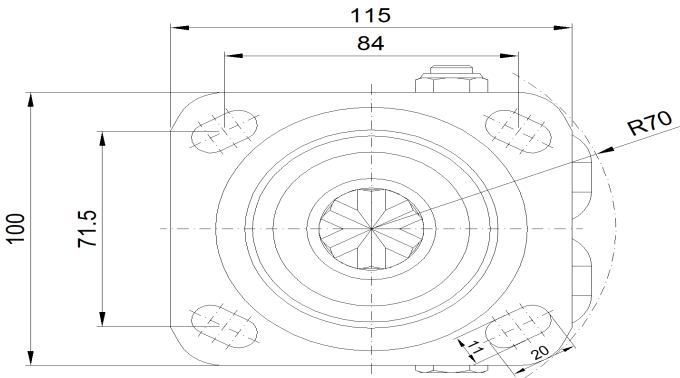
Advantages at a glance

Rolling Resistance	● ● ● ● ●
Operating Noise	● ● ● ● ●
Floor Surface Preservation	● ● ● ● ●

Dimensions



Mounting



\* For any deviation between metric and imperial spec, please refer to the metric spec.