



1165-2 Heavy Duty AMR/AGV-2 Caster Series

ZQPU (brown round) Wheel Diameter x Wheel Width 32.5 x 15mm

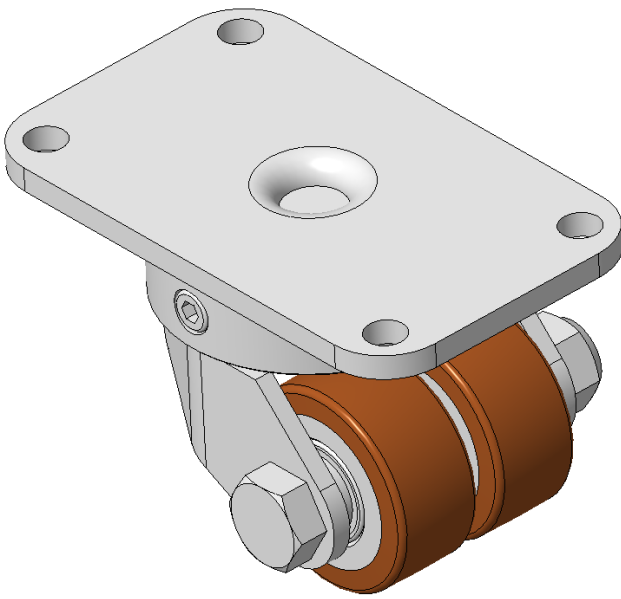
EAN

KS-11655102802043

Swivel Casters with Welded Caster Fork, Zine-Plated finish
Mounting Type - Top Plate, 70x37mm Bolt Hole Spacing
Cast Iron Wheel Center, High Quality Polyurethane Wheel Tread, Cast Iron brown
Bearings—special Ball Bearings for reduced Rolling Resistance
ZQPU Dual wheel, Ergonomic design designally designed for easier starting and turning

Wheel tread: Made of high-quality polyurethane
Wheel Center: Iron core/cast iron

Drawings are for reference only and may differ from the product



Picture may differ from original product

Technical Data

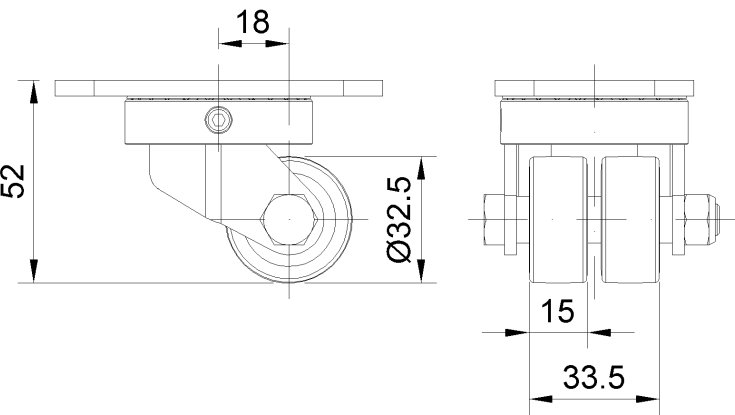
☒ Metric ☐ Imperial

Wheel Diameter	32.5mm
Wheel Width	15mm
Wheel Bearing	Wheels With Ball Bearings
Plate Size	76 x 51mm
Bolt Hole Spacing	70 x 37mm
Plate Hole	9mm
Offset	18mm
Swivel Interference	92mm
Overall Height	52mm
Swivel Radius	46mm
Hardness Of Tread	92±5° Shore A
Load Capacity (Dynamic)	70kgs
Load Capacity (Static)	105kgs
Temperature	-20°C to +70°C
Fork Type	Swivel Caster
Stainless	N/A
Electrical Conductivity	N/A
Anti-Static	N/A
Weight	0.48kgs
Standard	ISO22883

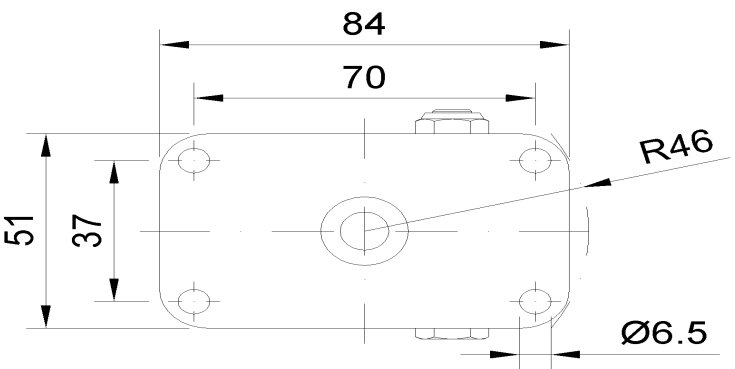
Advantages at a glance

Rolling Resistance	• • • • •
Operating Noise	• • • • •
Floor Surface Preservation	• • • • •

Dimensions



Mounting



* For any deviation between metric and imperial spec, please refer to the metric spec.