

Product Information Sheet

1165-3 AMR/AGV-3 Double Precision Ball Bearing Caster (Medium Duty) Series



ZQPU Wheel (Brown Arc) Wheel Diameter × Wheel Width 32.5 × 15 mm

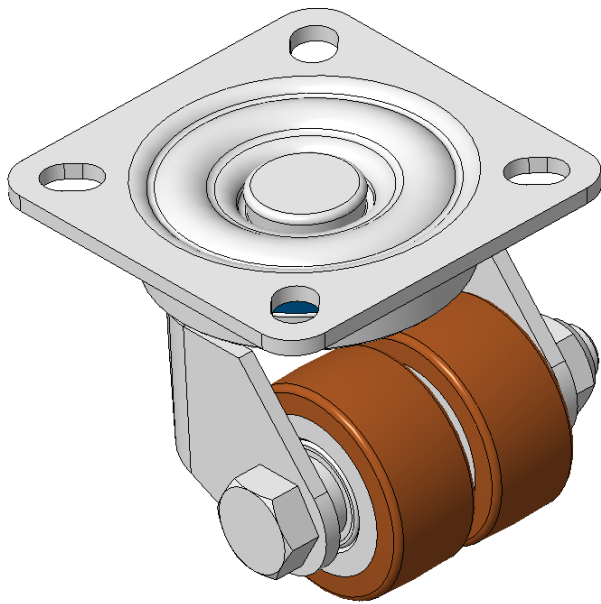
EAN

KS-11655103802013

Actual Casters, Welded Caster Fork, Zine-Plated finish
Base plate Mounting Type, 42.5x42.5mm Bolt Hole Spacing
Cast Iron Wheel Center, High Quality Polyurethane Wheel Tread, Cast Iron brown
Bearings—specially designed precision balls to reduce Rolling Resistance
ZQPU dual wheels, Ergonomic design designally designed for easier starting and turning

Wheel Tread: Hhigh-Quality Polyurethane
Wheel Center: Iron core/cast iron

Drawings are for reference only and may differ from the product



Picture may differ from original product

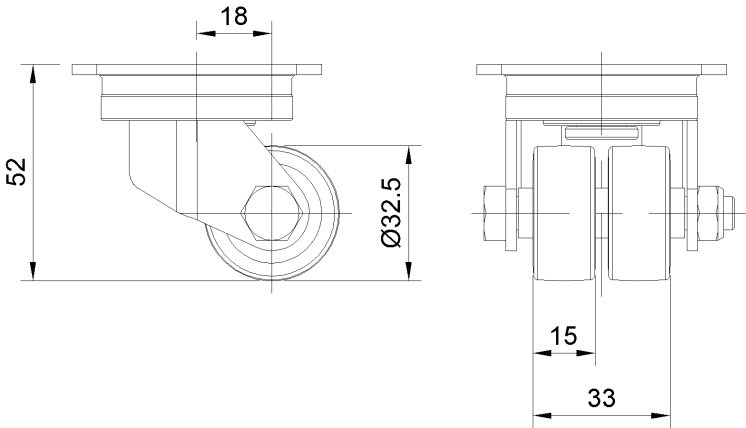
Technical Data

<input checked="" type="radio"/> Imperial <input type="radio"/> Metric	
Wheel Diameter	32.5mm
Wheel Width	6 "
Wheel Bearing	Wheels With Ball Bearings
Plate Size	2-7/16 " x 2-7/16 "
Bolt Hole Spacing	1-11/16"x1-11/16"
Plate Hole	23/64 " x 1/4 "
Offset	3/4 "
Swivel Interference	3-3/8 "
Overall Height	1-15/16 "
Swivel Radius	1-11/16 "
Hardness Of Tread	92±5° Shore A
Load Capacity (Dynamic)	154lbs
Load Capacity (Static)	231lbs
Temperature	-4°F to +158°F
Fork Type	Swivel Caster
Stainless	N/A
Electrical Conductivity	N/A
Anti-Static	N/A
Weight	0.7lbs
Standard	ISO22883

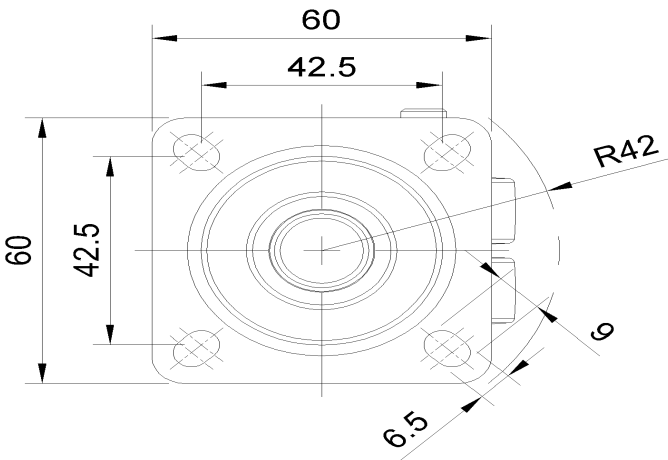
Advantages at a glance

Rolling Resistance	● ● ● ● ●
Operating Noise	● ● ● ● ●
Floor Surface Preservation	● ● ● ● ●

Dimensions



Mounting



* For any deviation between metric and imperial spec, please refer to the metric spec.