

1165-1 Heavy Duty AMR/AGV Spring-Loading Caster Wheel Series



QPU (brown round) Wheel Diameter × Wheel Width 62.5 x 45mm

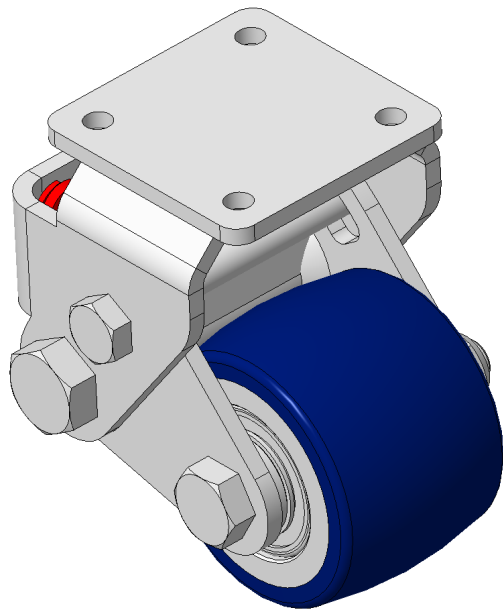
EAN

KS-11655200531033

Rigid Spring-loaded castor, Welded Caster Fork Surface Zine-Plated, Top Plate Mounting Type, Hole spacing 42.5x42.5 Wheel core made of cast iron, High Quality Polyurethane Wheel Tread Iron blue, Bearing - Ball Bearing.

Wheel tread: Made of high quality polyurethane  
Wheel Center: iron core/cast iron core

Drawings are for reference only and may differ from the product



Picture may differ from original product

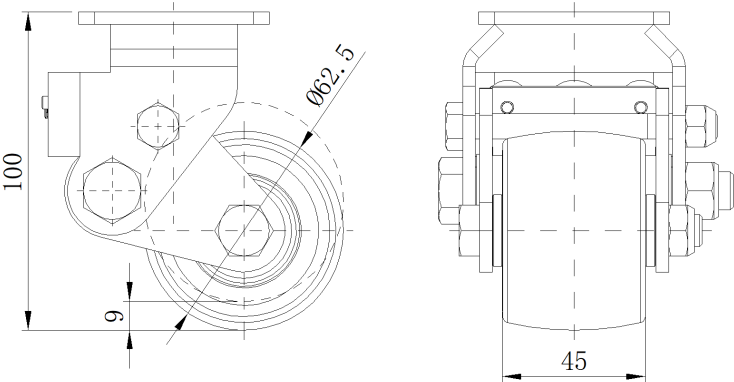
Technical Data

<input checked="" type="radio"/> Imperial <input type="radio"/> Metric	
Wheel Diameter	2-1/2 "
Wheel Width	1-13/16 "
Wheel Bearing	Wheels With Ball Bearings
Plate Size	2-7/16 " x 2-7/16 "
Bolt Hole Spacing	1-11/16"x1-11/16"
Plate Hole	1/4 "
Overall Height	4 "
Hardness Of Tread	87±5° Shore A
Load Capacity (Dynamic)	441lbs
Load Capacity (Static)	661lbs
Temperature	-4°F to +158°F
Fork Type	Rigid Caster
Stainless	N/A
Electrical Conductivity	N/A
Anti-Static	N/A
Weight	2.9lbs
Standard	ISO22883

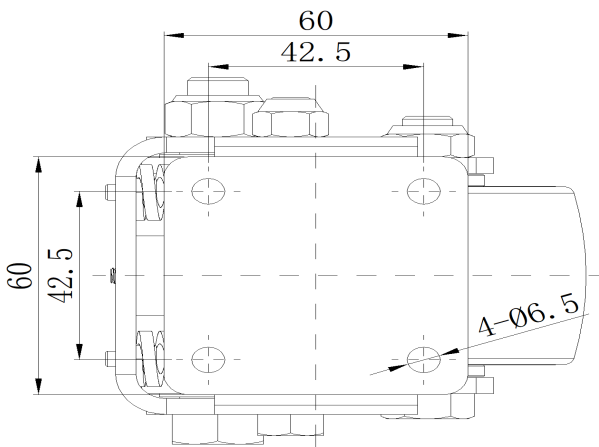
Advantages at a glance

Rolling Resistance	● ● ● ● ●
Operating Noise	● ● ● ● ●
Floor Surface Preservation	● ● ● ● ●

Dimensions



Mounting



\* For any deviation between metric and imperial spec, please refer to the metric spec.