

1165-1 Heavy Duty AMR/AGV Spring-Loading Caster Wheel Series



QPU (brown round) Wheel Diameter × Wheel Width 62.5 x 45mm

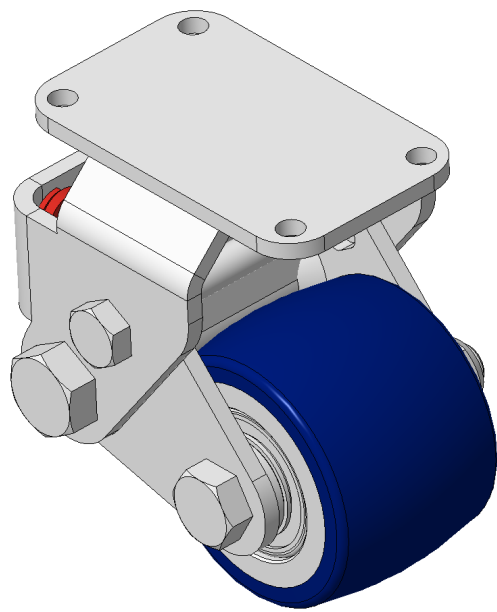
EAN

KS-11655200531043

Rigid Spring-loaded Caster with Welded Caster Fork Zine-Plated, Mounting Type - Top Plate, 70x37 Bolt Hole Spacing Cast Iron Wheel Center with High Quality Polyurethane tread Blue Cast Iron, Bearing—Ball Bearing

Wheel Tread: Made of high-quality polyurethane  
Wheel Center: iron core/cast iron core

Drawings are for reference only and may differ from the product



Picture may differ from original product

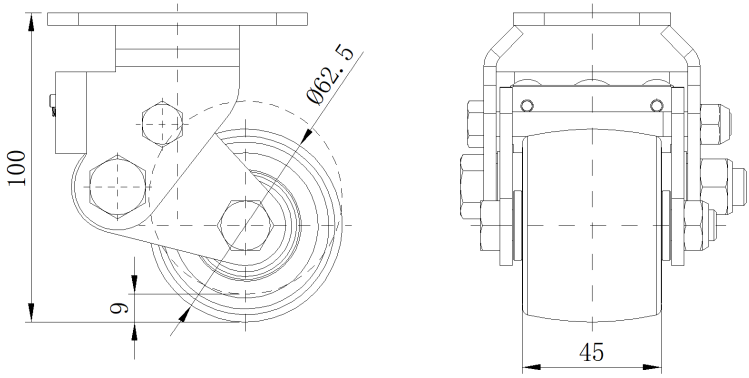
Technical Data

|  |                           |
|--|---------------------------|
| <input checked="" type="radio"/> Imperial <input type="radio"/> Metric |                           |
| Wheel Diameter   | 2-1/2 "                   |
| Wheel Width  | 1-13/16 "                 |
| Wheel Bearing  | Wheels With Ball Bearings |
| Plate Size   | 3-3/8 " x 1-15/16 "       |
| Bolt Hole Spacing  |                           |
| Plate Hole   | 1/4 "                     |
| Overall Height   | 4 "                       |
| Hardness Of Tread  | 87±5° Shore A             |
| Load Capacity (Dynamic)  | 441lbs                    |
| Load Capacity (Static)   | 661lbs                    |
| Temperature  | -4°F to +158°F            |
| Fork Type  | Rigid Caster              |
| Stainless  | N/A                       |
| Electrical Conductivity  | N/A                       |
| Anti-Static  | N/A                       |
| Weight   | 2.9lbs                    |
| Standard   | ISO22883                  |

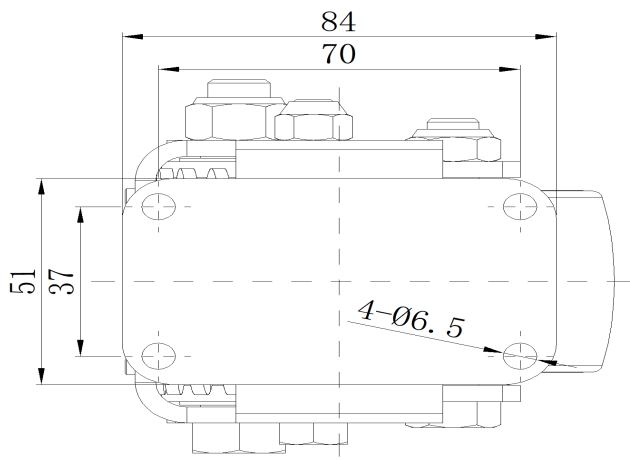
Advantages at a glance

|                            |           |
|----------------------------|-----------|
| Rolling Resistance         | ● ● ● ● ● |
| Operating Noise            | ● ● ● ● ● |
| Floor Surface Preservation | ● ● ● ● ● |

Dimensions



Mounting



\* For any deviation between metric and imperial spec, please refer to the metric spec.