

1165-1 Heavy Duty AMR/AGV Spring-Loading Caster Wheel Series



QPU (brown round) Wheel Diameter × Wheel Width 62.5 x 45mm

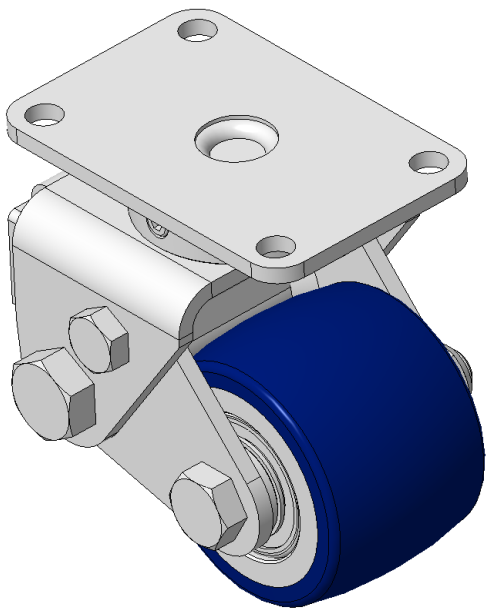
EAN

KS-11655200532013

Spring-loaded, movable Caster with Welded Caster Fork. Zine-Plated, Mounting Type - Top Plate, 73 x 44.5" Bolt Hole Spacing Cast Iron Wheel Center with High Quality Polyurethane tread Blue finish, Bearing—Ball Bearing.

Wheel Tread: Made of high-quality polyurethane  
Wheel Center: iron core/cast iron core

Drawings are for reference only and may differ from the product



Picture may differ from original product

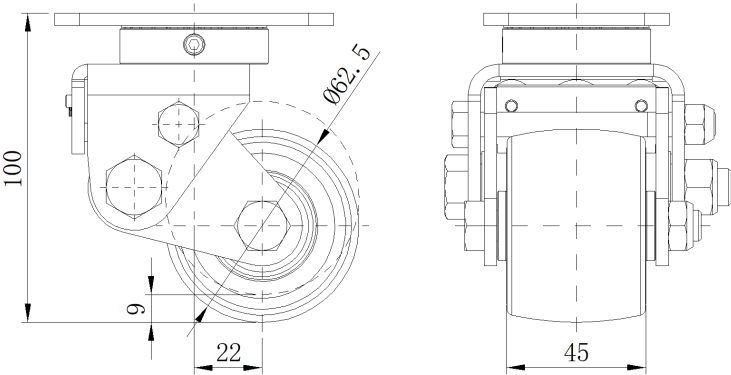
Technical Data

<input checked="" type="radio"/> Imperial <input type="radio"/> Metric	
Wheel Diameter	2-1/2 "
Wheel Width	1-13/16 "
Wheel Bearing	Wheels With Ball Bearings
Plate Size	3-9/16 " x 2-7/16 "
Bolt Hole Spacing	2-7/8"x1-3/4"
Plate Hole	3/8 "
Offset	7/8 "
Swivel Interference	4-13/16 "
Overall Height	4 "
Swivel Radius	2-7/16 "
Hardness Of Tread	87±5° Shore A
Load Capacity (Dynamic)	441lbs
Load Capacity (Static)	661lbs
Temperature	-4°F to +158°F
Fork Type	Swivel Caster
Stainless	N/A
Electrical Conductivity	N/A
Anti-Static	N/A
Weight	3.5lbs
Standard	ISO22883

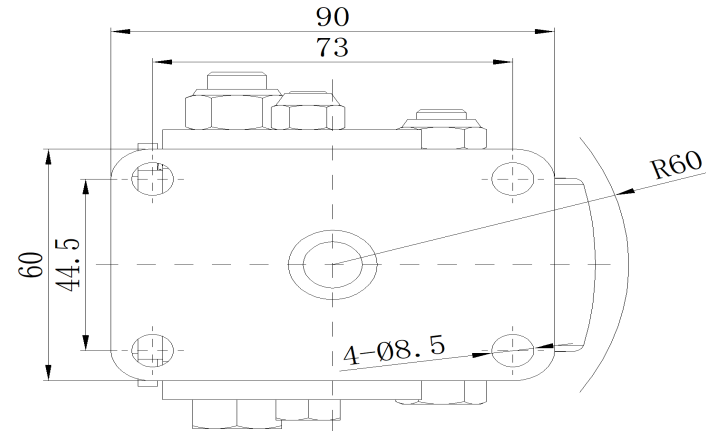
Advantages at a glance

Rolling Resistance	● ● ● ● ●
Operating Noise	● ● ● ● ●
Floor Surface Preservation	● ● ● ● ●

Dimensions



Mounting



\* For any deviation between metric and imperial spec, please refer to the metric spec.