

1165-1 Heavy Duty AMR/AGV Spring-Loading Caster Wheel Series



QPU (brown round) Wheel Diameter × Wheel Width 62.5 x 45mm

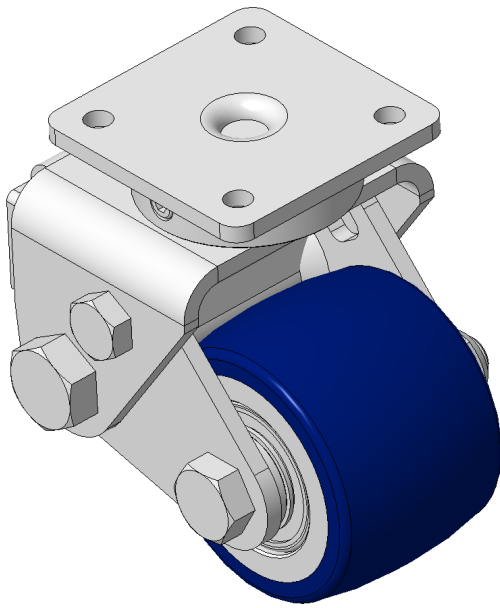
EAN

KS-11655200532033

Spring-loaded, movable Caster with Welded Caster Fork. Zine-Plated, Mounting Type - Top Plate, 42.5 x 42.5 Bolt Hole Spacing Cast Iron Wheel Center with High Quality Polyurethane tread Blue finish, Bearing—Ball Bearing.

Wheel Tread: Made of high-quality polyurethane  
Wheel Center: iron core/cast iron core

Drawings are for reference only and may differ from the product



Picture may differ from original product

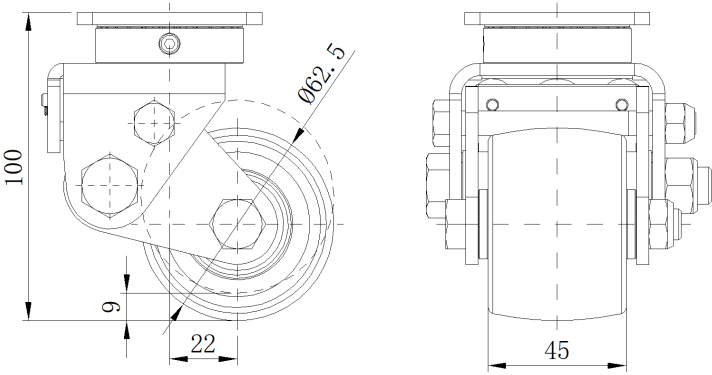
Technical Data

<input checked="" type="radio"/> Metric <input type="radio"/> Imperial	
Wheel Diameter	62.5mm
Wheel Width	45mm
Wheel Bearing	Wheels With Ball Bearings
Plate Size	60 x 60mm
Bolt Hole Spacing	42.5x42.5mm
Plate Hole	6.5mm
Offset	22mm
Swivel Interference	120mm
Overall Height	100mm
Swivel Radius	60mm
Hardness Of Tread	87±5° Shore A
Load Capacity (Dynamic)	200kgs
Load Capacity (Static)	300kgs
Temperature	-20°C to +70°C
Fork Type	Swivel Caster
Stainless	N/A
Electrical Conductivity	N/A
Anti-Static	N/A
Weight	1.52kgs
Standard	ISO22883

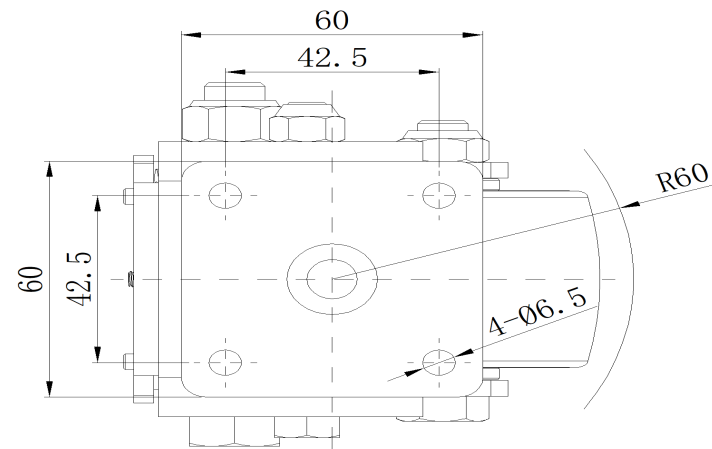
Advantages at a glance

Rolling Resistance	● ● ● ● ●
Operating Noise	● ● ● ● ●
Floor Surface Preservation	● ● ● ● ●

Dimensions



Mounting



\* For any deviation between metric and imperial spec, please refer to the metric spec.