



1165-2 Heavy Duty AMR/AGV-2 Caster Series

ZQPU (Milled Blue) Wheel Diameter × Wheel Width 62.5× 20 (41.5) mm

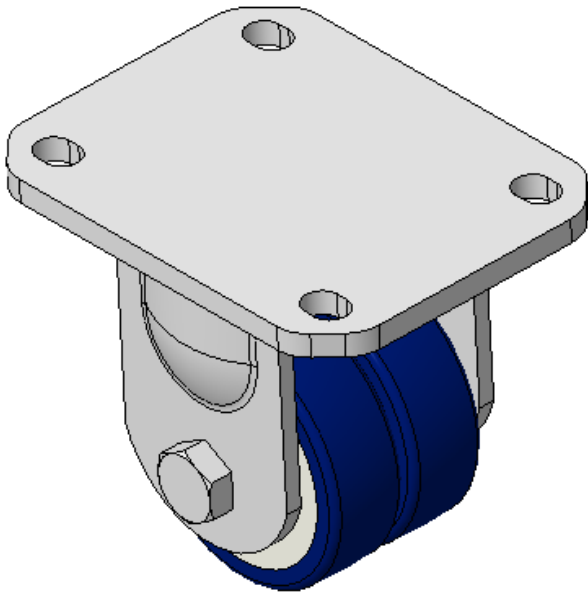
EAN

KS-11655202801023

Rigid Caster with Welded Caster Fork Extended control lever surface, Mounting Type - Top Plate, 80x60 Bolt Hole Spacing Cast Iron Wheel Center, High Quality Polyurethane tread, Cast Iron blue Bearing—special Ball Bearing for reduced Rolling Resistance ZQPU Dual Wheels, Ergonomic design for easier starting and turning

Wheel tread: Made of high-quality polyurethane
Wheel Center: iron core/cast iron

Drawings are for reference only and may differ from the product



Picture may differ from original product

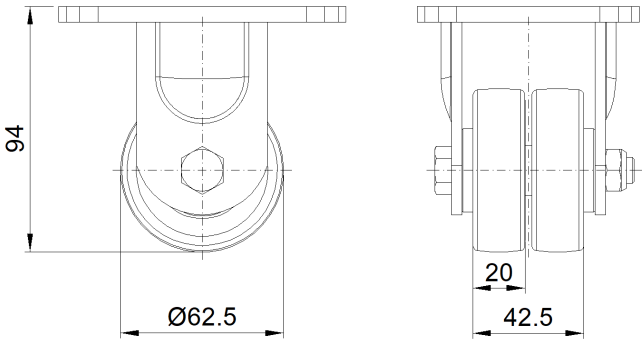
Technical Data

<input checked="" type="radio"/> Metric <input type="radio"/> Imperial	
Wheel Diameter	62.5mm
Wheel Width	42.5mm
Wheel Bearing	Wheels With Ball Bearings
Plate Size	110 x 85mm
Bolt Hole Spacing	80 x 60mm
Plate Hole	12 x 9mm
Overall Height	94mm
Hardness Of Tread	87±5° Shore A
Load Capacity (Dynamic)	250kgs
Load Capacity (Static)	375kgs
Temperature	-20°C to +70°C
Fork Type	Rigid Caster
Stainless	N/A
Electrical Conductivity	N/A
Anti-Static	N/A
Weight	0.96kgs
Standard	ISO22883

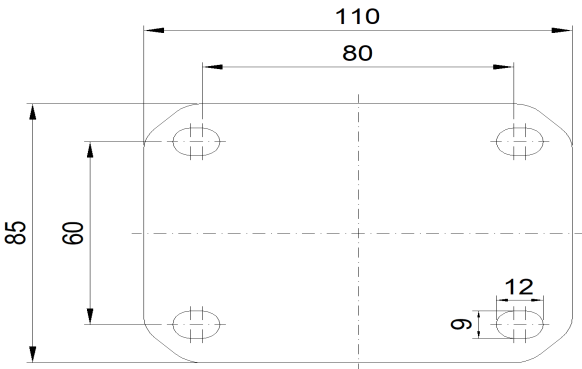
Advantages at a glance

Rolling Resistance	● ● ● ● ●
Operating Noise	● ● ● ● ●
Floor Surface Preservation	● ● ● ● ●

Dimensions



Mounting



* For any deviation between metric and imperial spec, please refer to the metric spec.