

1165-3 AMR/AGV-3 Double Precision Ball Bearing Caster (Medium Duty) Series



QPU (blue round) Wheel Diameter x Wheel Width 62.5 x 45mm

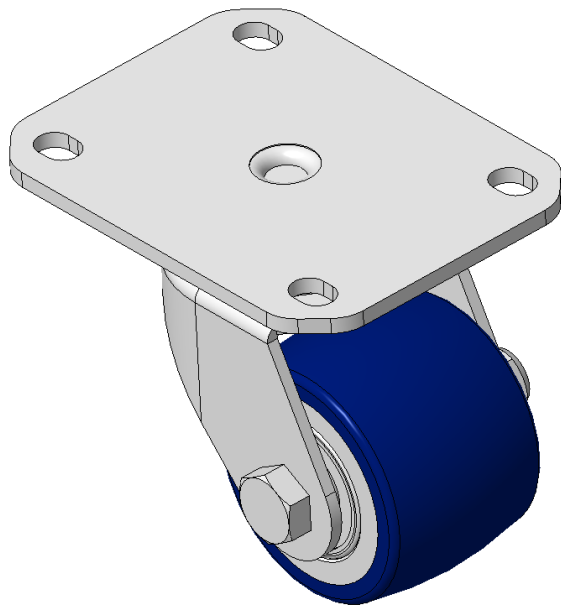
EAN

KS-11655203532013

Swivel Caster with Welded Caster Fork, Zine-Plated finish
Mounting Type - Top Plate, 80x60 Bolt Hole Spacing
Cast Iron core with High Quality Polyurethane Wheel Tread
Blue finish, Bearing—Ball Bearings

Wheel tread: Made of high-quality polyurethane
Wheel Center: iron core/cast iron

Drawings are for reference only and may differ from the product



Picture may differ from original product

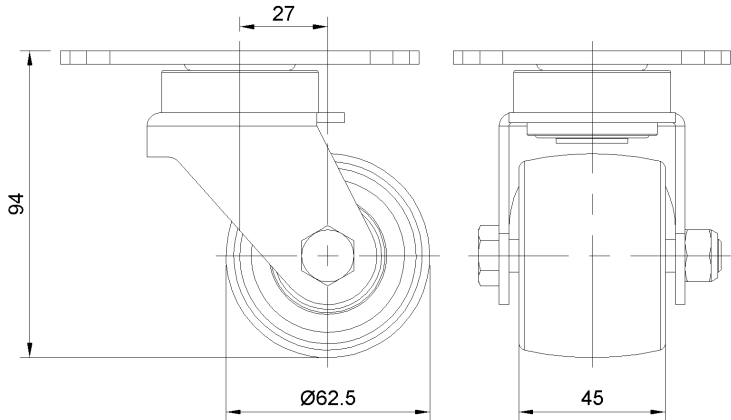
Technical Data

<input checked="" type="radio"/> Metric <input type="radio"/> Imperial	
Wheel Diameter	62.5mm
Wheel Width	45mm
Wheel Bearing	Wheels With Ball Bearings
Plate Size	110 x 85mm
Bolt Hole Spacing	80 x 60mm
Plate Hole	12 x 9mm
Offset	27mm
Swivel Interference	130mm
Overall Height	94mm
Swivel Radius	65mm
Hardness Of Tread	87±5° Shore A
Load Capacity (Dynamic)	200kgs
Load Capacity (Static)	300kgs
Temperature	-20°C to +70°C
Fork Type	Swivel Caster
Stainless	N/A
Electrical Conductivity	N/A
Anti-Static	N/A
Weight	1.18kgs
Standard	ISO22883

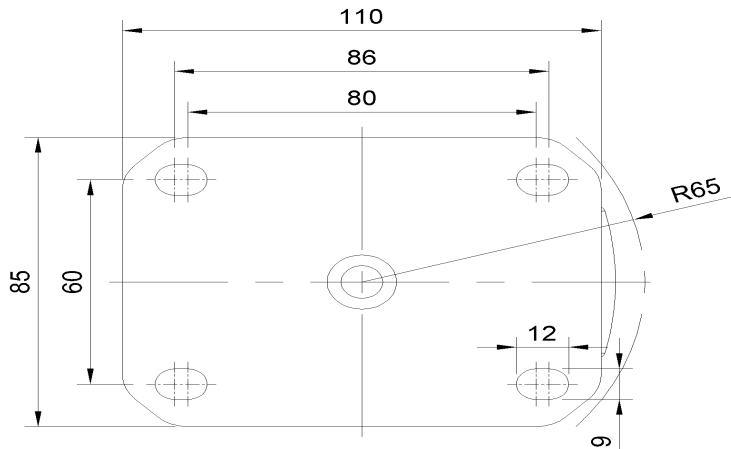
Advantages at a glance

Rolling Resistance	● ● ● ● ●
Operating Noise	● ● ● ● ●
Floor Surface Preservation	● ● ● ● ●

Dimensions



Mounting



* For any deviation between metric and imperial spec, please refer to the metric spec.