

1165-3 AMR/AGV-3 Double Precision Ball Bearing Caster (Medium Duty) Series



Anti-static ZQPU (milling black) Wheel Diameter x Wheel Width 62.5 x 20 (41.5) mm

EAN

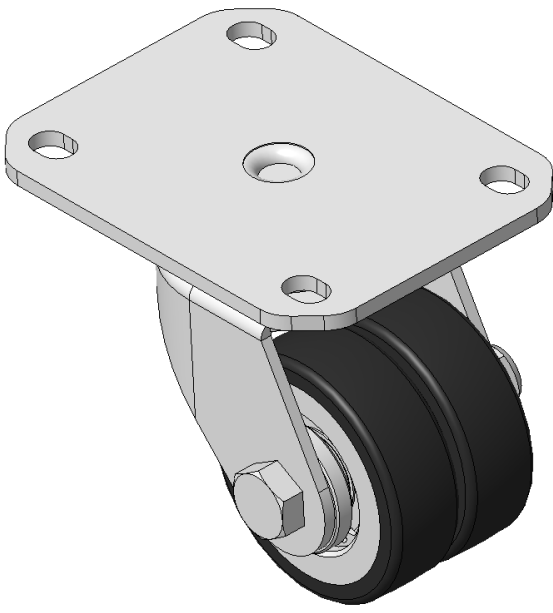
KS-11655203802713

Swivel Casters, Welded Caster Fork, electroplated finish
Mounting Type - Top Plate, 80x60 Bolt Hole Spacing
Cast Iron Wheel Center, High Quality Polyurethane Wheel Tread, Cast Iron black Bearings—special Ball Bearings for reduced Rolling Resistance
ZQPU Dual wheel, Ergonomic design designally designed for easier starting and turning

Wheel tread: Made of high-quality polyurethane

Wheel Center: iron core/cast iron

Drawings are for reference only and may differ from the product



Picture may differ from original product

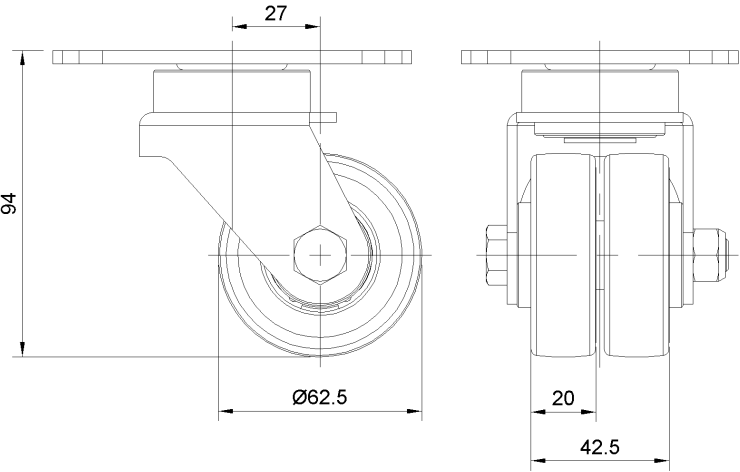
Technical Data

<input checked="" type="radio"/> Imperial <input type="radio"/> Metric	
Wheel Diameter	2-1/2 "
Wheel Width	1-11/16 "
Wheel Bearing	Wheels With Ball Bearings
Plate Size	4-3/8 " x 3-7/16 "
Bolt Hole Spacing	3-3/16 " x 2-7/16 "
Plate Hole	1/2 " x 23/64 "
Offset	1-1/16 "
Swivel Interference	5-3/16 "
Overall Height	3-3/4 "
Swivel Radius	2-9/16 "
Hardness Of Tread	77±5° Shore A
Load Capacity (Dynamic)	331lbs
Load Capacity (Static)	496lbs
Temperature	-4°F to +158°F
Fork Type	Swivel Caster
Stainless	N/A
Electrical Conductivity	N/A
Anti-Static	Y 10^6/~10^9/Ω
Weight	3.5lbs
Standard	ISO22883

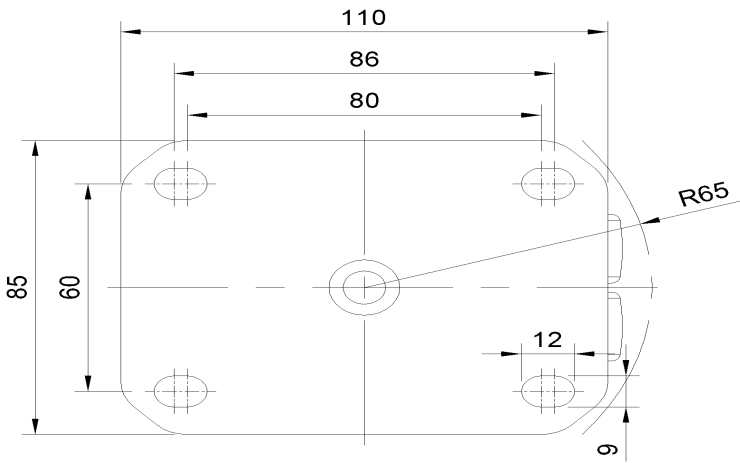
Advantages at a glance

Rolling Resistance	● ● ● ● ●
Operating Noise	● ● ● ● ●
Floor Surface Preservation	● ● ● ● ●

Dimensions



Mounting



* For any deviation between metric and imperial spec, please refer to the metric spec.