

1165-3 AMR/AGV-3 Double Precision Ball Bearing Caster (Medium Duty) Series



Anti-static ZQPU (milling black) Wheel Diameter x Wheel Width 62.5 x 20 (41.5) mm

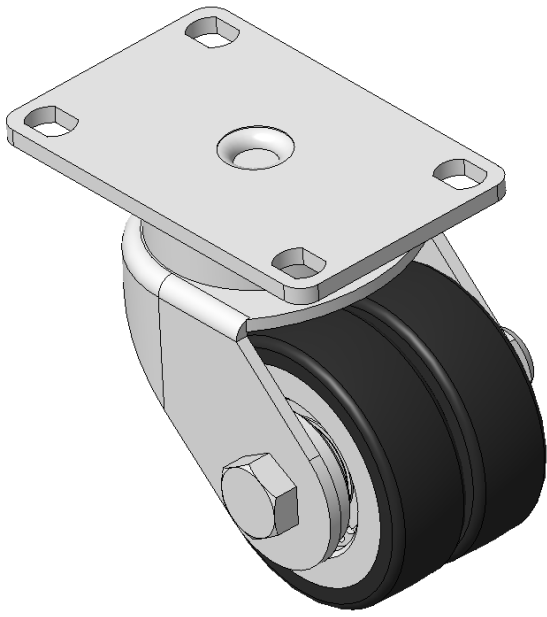
EAN

KS-11655203802743

Swivel Casters, Welded Caster Fork, electroplated finish  
Mounting Type - Top Plate, 75x45 Bolt Hole Spacing  
Cast Iron Wheel Center, High Quality Polyurethane Wheel Tread, Cast Iron black Bearings—special Ball Bearings for reduced Rolling Resistance  
ZQPU dual wheels, Ergonomic design designally designed for easier starting and turning

Wheel tread: Made of high-quality polyurethane  
Wheel Center: iron core/cast iron

Drawings are for reference only and may differ from the product



Picture may differ from original product

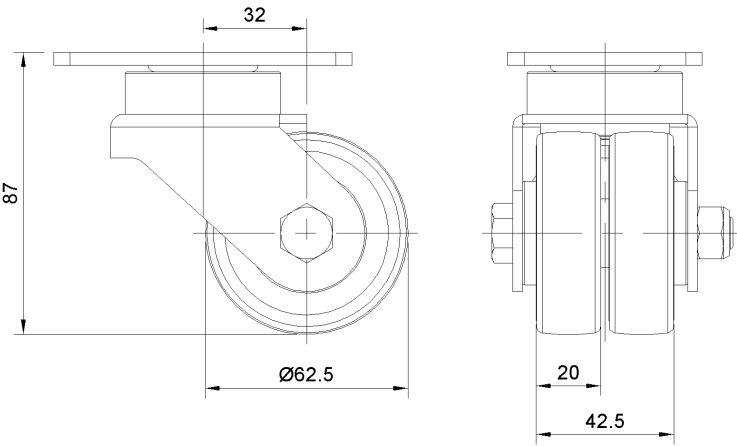
Technical Data

<input checked="" type="radio"/> Imperial <input type="radio"/> Metric	
Wheel Diameter	2-1/2 "
Wheel Width	1-11/16 "
Wheel Bearing	Wheels With Ball Bearings
Plate Size	3-11/16 " x 2-7/16 "
Bolt Hole Spacing	3 " x 1-13/16 "
Plate Hole	3/8 " x 3/8 "
Offset	1-5/16 "
Swivel Interference	5-1/4 "
Overall Height	3-1/2 "
Swivel Radius	2-5/8 "
Hardness Of Tread	77±5° Shore A
Load Capacity (Dynamic)	331lbs
Load Capacity (Static)	496lbs
Temperature	-4°F to +158°F
Fork Type	Swivel Caster
Stainless	N/A
Electrical Conductivity	N/A
Anti-Static	Y 10^6/~10^9/Ω
Weight	2.4lbs
Standard	ISO22883

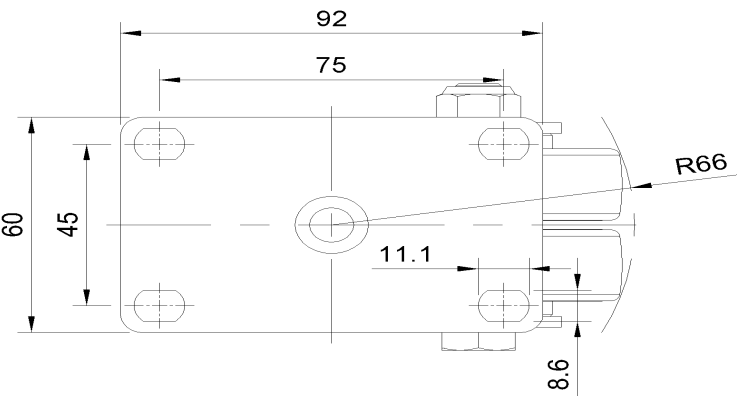
Advantages at a glance

Rolling Resistance	● ● ● ● ●
Operating Noise	● ● ● ● ●
Floor Surface Preservation	● ● ● ● ●

Dimensions



Mounting



\* For any deviation between metric and imperial spec, please refer to the metric spec.