

Product Information Sheet

1165-4 1165 Series — AMR/AGV-4 Single Precision Ball Bearing Caster (Medium Duty)Series



Classic Resolute (Pearlescent Dark Gray) Wheel Diameter × Wheel Width 62.5 × 23.5mm

EAN

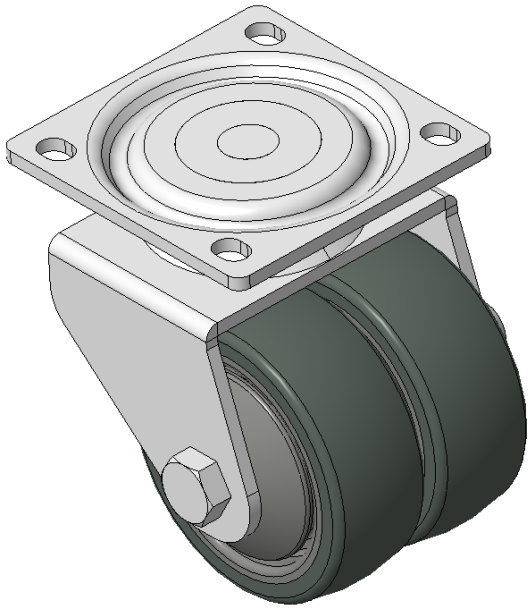
KS-11655204452333

Actual Casters, Welded Caster Fork, electroplated surface
Base plate Mounting Type device, 55x52mm Bolt Hole Spacing
High-Quality Impact-Resistant Polypropylene Wheel Center, High-Quality Reinforced Polypropylene Rubber (TPR) Wheel Tread
Cast Iron dark gray, Bearing—Ball Bearings

Wheel tread: Thermoplastic elastomer (TPR) wheel tread

Wheel Center: Polypropylene wheel core

Drawings are for reference only and may differ from the product



Picture may differ from original product

Technical Data

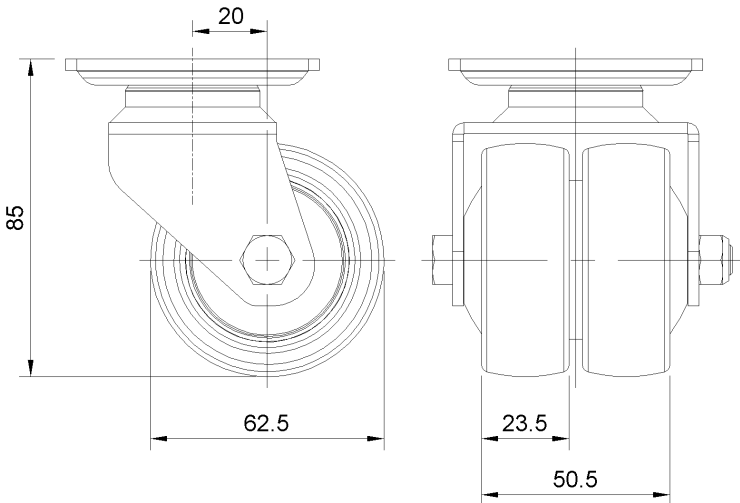
☒ Metric ☐ Imperial

| | |
|-------------------------|---------------------------|
| Wheel Diameter | 62.5mm |
| Wheel Width | 23.5mm |
| Wheel Bearing | Wheels With Ball Bearings |
| Plate Size | 68 x 68mm |
| Bolt Hole Spacing | 55 x 52mm |
| Plate Hole | 6.5 x 8.5mm |
| Offset | 20mm |
| Swivel Interference | 112mm |
| Overall Height | 85mm |
| Swivel Radius | 56mm |
| Hardness Of Tread | 72±5° Shore A |
| Load Capacity (Dynamic) | 80kgs |
| Load Capacity (Static) | 120kgs |
| Temperature | -20°C to +60°C |
| Fork Type | Swivel Caster |
| Stainless | N/A |
| Electrical Conductivity | N/A |
| Anti-Static | N/A |
| Weight | 1.72kgs |
| Standard | ISO22883 |

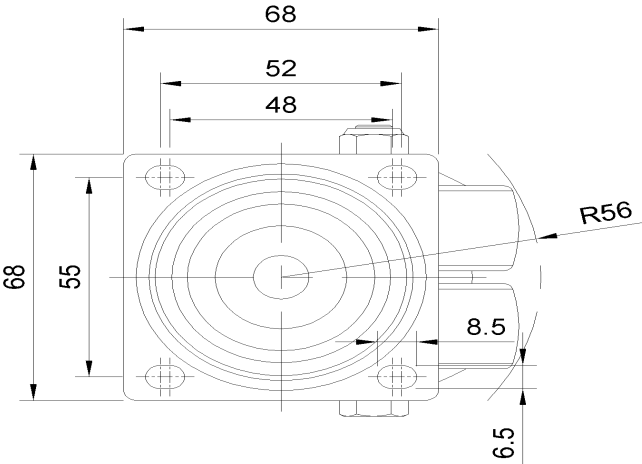
Advantages at a glance

| | |
|----------------------------|-----------|
| Rolling Resistance | ● ● ● ● ● |
| Operating Noise | ● ● ● ● ● |
| Floor Surface Preservation | ● ● ● ● ● |

Dimensions



Mounting



* For any deviation between metric and imperial spec, please refer to the metric spec.