

Product Data Sheet

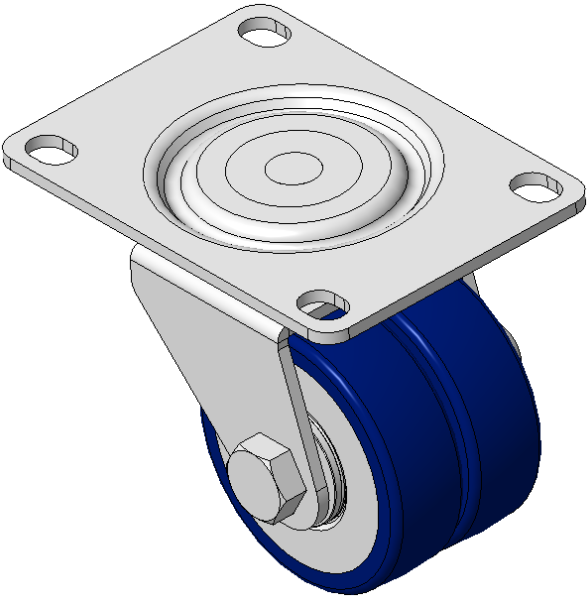
1165-4 1165 Series — AMR/AGV-4 Single Precision Ball Bearing Caster (Medium Duty)Series



ZQPU (Milled Blue) Wheel Diameter × Wheel Width 62.5× 20 (41.5) mm

EAN

KS-11655204802023



Swivel Caster, Top Plate Riveted and Stamping with 75 x 45 mm (3" x 1-3/4") Bolt Hole Spacing
Electroplated finish, Mounting Type - Top Plate, 80x60 Bolt Hole Spacing
Cast Iron core, High Quality Polyurethane Wheel Tread
Blue finish, Bearing – Ball Bearings

Wheel tread: Made of high-quality polyurethane

Wheel Center: iron core/cast iron

Drawings are for reference only and may differ from the product

Picture may differ from original product

Technical Data

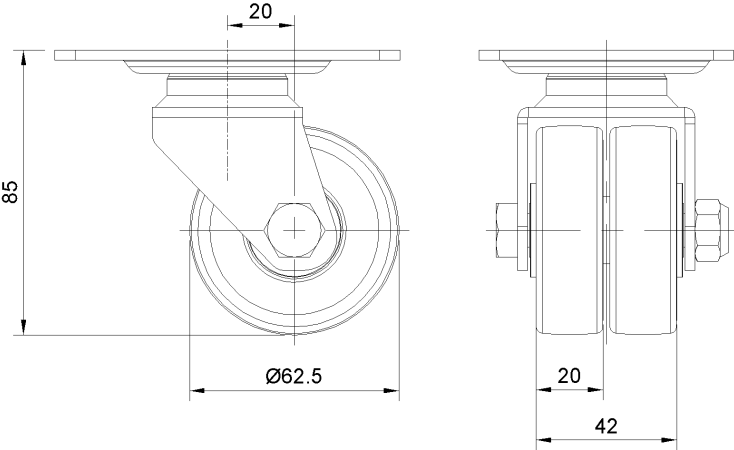
☒ Imperial ☐ Metric

| | |
|-------------------------|---------------------------|
| Wheel Diameter | 2-1/2 " |
| Wheel Width | 1-11/16 " |
| Wheel Bearing | Wheels With Ball Bearings |
| Plate Size | 4-1/16 " x 3 " |
| Bolt Hole Spacing | 3-3/16 " x 2-7/16 " |
| Plate Hole | 1/2 " x 23/64 " |
| Offset | 13/16 " |
| Swivel Interference | 5 " |
| Overall Height | 3-7/16 " |
| Swivel Radius | 2-1/4 " |
| Hardness Of Tread | 87±5° Shore A |
| Load Capacity (Dynamic) | 441lbs |
| Load Capacity (Static) | 661lbs |
| Temperature | -4°F to +158°F |
| Fork Type | Swivel Caster |
| Stainless | N/A |
| Electrical Conductivity | N/A |
| Anti-Static | N/A |
| Weight | 4.3lbs |
| Standard | ISO22883 |

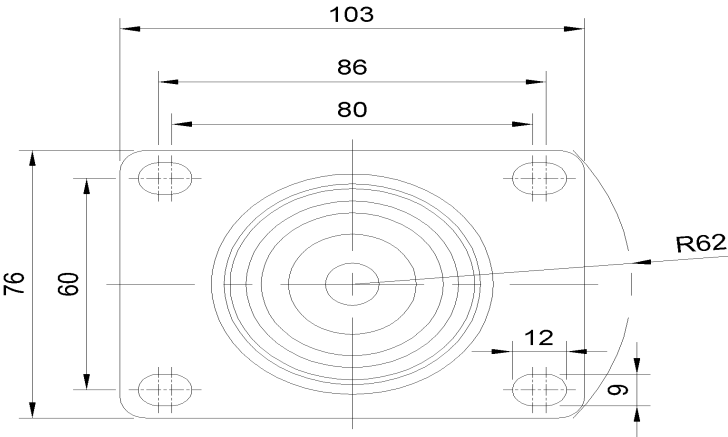
Advantages at a glance

| | |
|----------------------------|-----------|
| Rolling Resistance | ● ● ● ● ● |
| Operating Noise | ● ● ● ● ● |
| Floor Surface Preservation | ● ● ● ● ● |

Dimensions



Mounting



* For any deviation between metric and imperial spec, please refer to the metric spec.