

MRC Series



MRC (Transparent) Wheel Diameter × Wheel Width 100 x 32mm

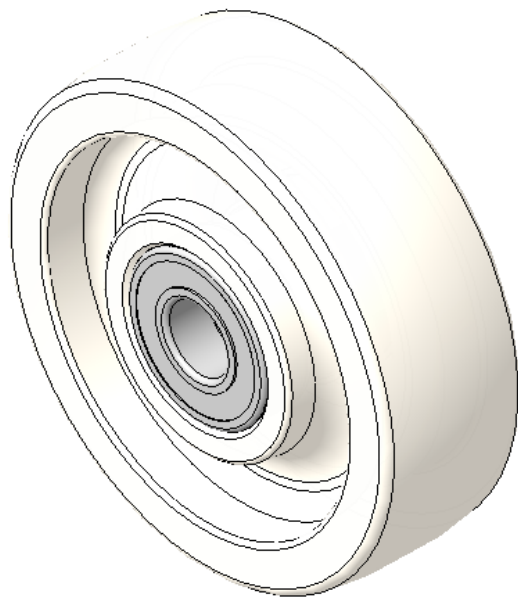
D

KS-12020704131372

Impact resistant, scratch-resistant, Not Be Dyed, corrosion resistant, highly abrasion resistant, Odorless. Resistant to many chemical corrosions, Heavy Load, very low Rolling Resistance. Color: Original color.

Wheel Center: Thermoplastic (PA6)
Outer packaging: Thermoplastic (PA6)
Bearing: Precision ball bearing

Drawings are for reference only and may differ from the product



Picture may differ from original product

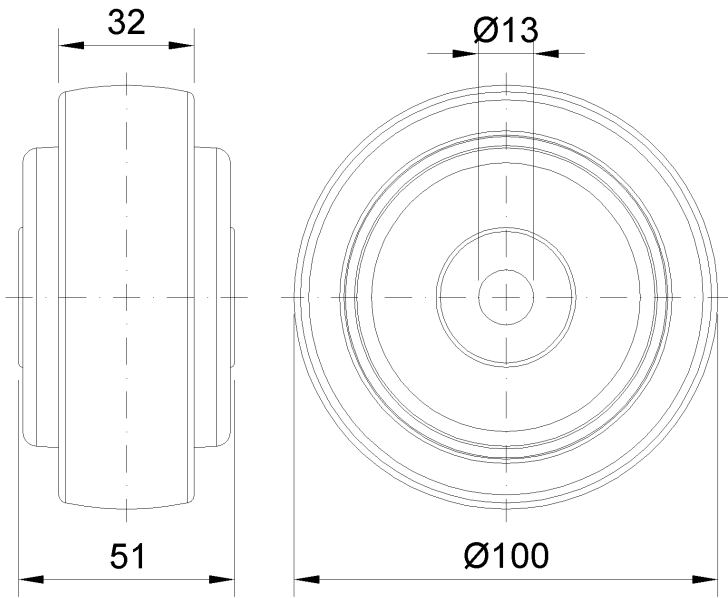
Technical Data

<input checked="" type="radio"/> Metric <input type="radio"/> Imperial	
Wheel Diameter(D)	100mm
Wheel Width(T2)	32mm
Wheel Bearing	Ball Bearing
Axle Bore(d)	13mm
Axle Bore(S)	—
Bearing Bore Depth(t)	—
Hub Lenth(T1)	51mm
Hardness Of Tread	75±5° Shore D
Load Capacity (Dynamic)	250kgs
Load Capacity (Static)	375kgs
Temperature	-20°C to +80°C
Electrical Conductivity	N/A
Anti-Static	N/A
Weight	0.26kgs
Standard	ISO22883

Advantages at a glance

Rolling Resistance	● ● ● ● ●
Operating Noise	● ● ○ ○ ○
Floor Surface Preservation	● ● ○ ○ ○

2D Dimensional Drawing of Single Wheel



* For any deviation between metric and imperial spec, please refer to the metric spec.