



MRC Series

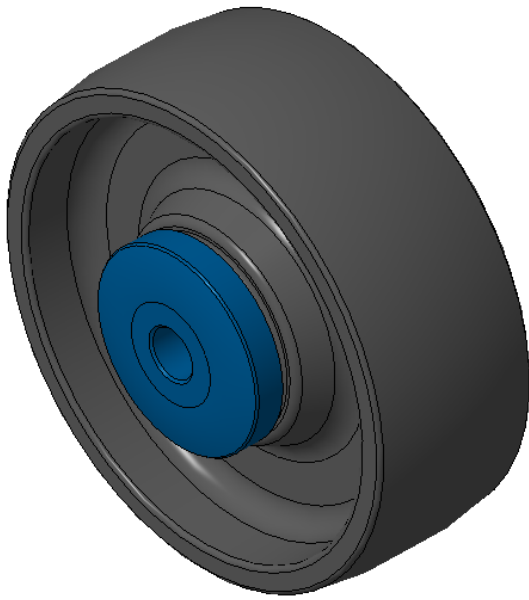
MRC (Black) Wheel Diameter × Wheel Width 100×36mm

D
KS-12020704153171

Impact resistant, scratch-resistant, Not Be Dyed, corrosion resistant, highly abrasion resistant, Odorless
Resistant to many chemical corrosions, Heavy Load, very low Rolling Resistance
Color: Black, with Dust Cap

Wheel Tread: Thermoplastic (PA6)
Outer packaging: Thermoplastic (PA6)
Bearing: Precision ball bearing

Drawings are for reference only and may differ from the product



Picture may differ from original product

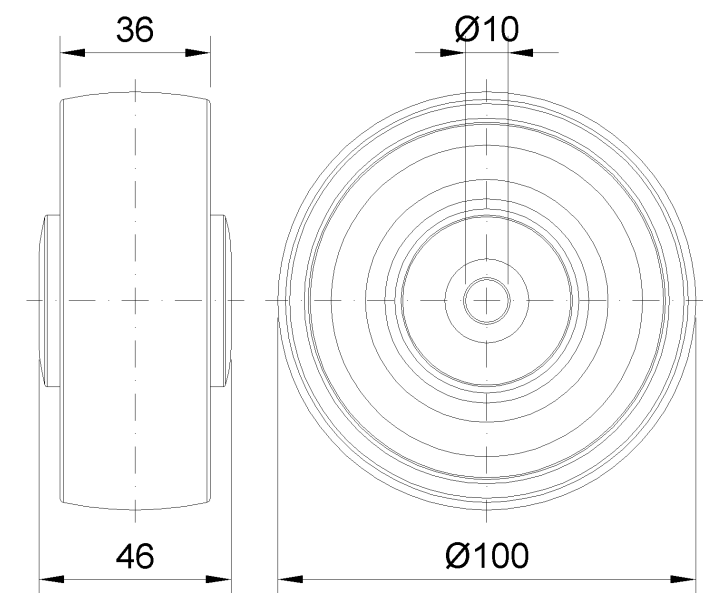
Technical Data

| | |
|--|----------------|
| <input checked="" type="radio"/> Metric <input type="radio"/> Imperial | |
| Wheel Diameter(D) | 100mm |
| Wheel Width(T2) | 36mm |
| Wheel Bearing | Ball Bearing |
| Axle Bore(d) | 10mm |
| Axle Bore(S) | — |
| Bearing Bore Depth(t) | — |
| Hub Lenth(T1) | 46mm |
| Hardness Of Tread | 75±5° Shore D |
| Load Capacity (Dynamic) | 150kgs |
| Load Capacity (Static) | 225kgs |
| Temperature | -20°C to +80°C |
| Electrical Conductivity | N/A |
| Anti-Static | N/A |
| Weight | 0.19kgs |
| Standard | ISO22883 |

Advantages at a glance

| | |
|----------------------------|-----------|
| Rolling Resistance | ● ● ● ● ● |
| Operating Noise | ● ● ○ ○ ○ |
| Floor Surface Preservation | ● ● ○ ○ ○ |

2D Dimensional Drawing of Single Wheel



* For any deviation between metric and imperial spec, please refer to the metric spec.