



MRC Series

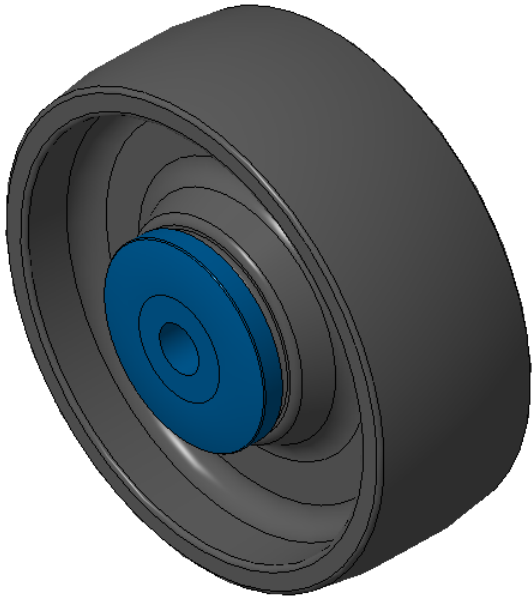
MRC (Black) Wheel Diameter × Wheel Width 100×36mm

D  
KS-12020704153174

Impact resistant, scratch-resistant, Not Be Dyed, corrosion resistant, highly abrasion resistant, Odorless  
Resistant to many chemical corrosions, Heavy Load, very low Rolling Resistance  
Color: Black, with Dust Cap

Wheel Tread: Thermoplastic (PA6)  
Outer packaging: Thermoplastic (PA6)  
Bearing: Precision ball bearing

Drawings are for reference only and may differ from the product



Picture may differ from original product

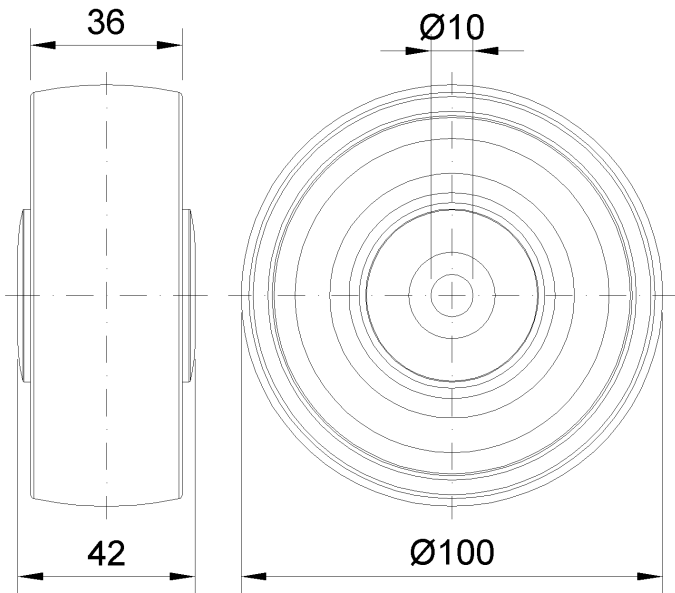
Technical Data

<input checked="" type="radio"/> Imperial <input type="radio"/> Metric	
Wheel Diameter(D)	4 "
Wheel Width(T2)	1-7/16 "
Wheel Bearing	Ball Bearing
Axle Bore(d)	3/8 "
Axle Bore(S)	—
Bearing Bore Depth(t)	—
Hub Lenth(T1)	1-11/16 "
Hardness Of Tread	75±5° Shore D
Load Capacity (Dynamic)	331lbs
Load Capacity (Static)	496lbs
Temperature	-4°F to +176°F
Electrical Conductivity	N/A
Anti-Static	N/A
Weight	0.4lbs
Standard	ISO22883

Advantages at a glance

Rolling Resistance	● ● ● ● ●
Operating Noise	● ● ○ ○ ○
Floor Surface Preservation	● ● ○ ○ ○

2D Dimensional Drawing of Single Wheel



\* For any deviation between metric and imperial spec, please refer to the metric spec.