



PPR Series

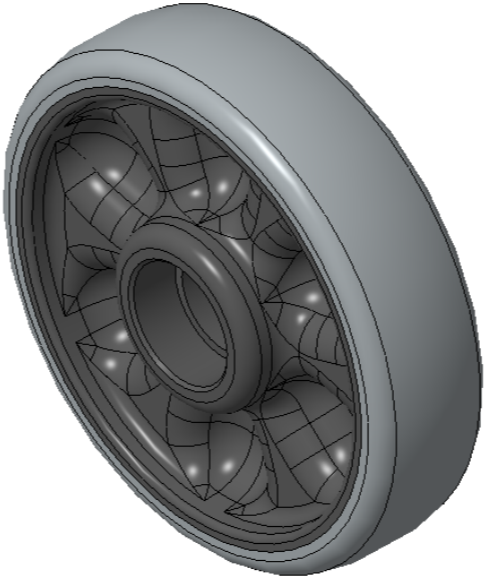
WPPR Conductive Wheel (Black Light Gray Flat) Wheel Diameter × Wheel Width 150 x 38mm

A  
KS-1202170615W200

Easy to Floor Surface Preservation, Non-Markings, Easy To Maneuver, and can withstand heavy loads.  
Low rolling and Swivel Resistance, resistant to corrosion from many corrosive substances.  
Color: Black/Light Gray

Wheel Center: High-quality impact-resistant polypropylene  
Outer packaging: Thermoplastic rubber elastomer (TPR)  
Bearing: Ball bearing

Drawings are for reference only and may differ from the product



Picture may differ from original product

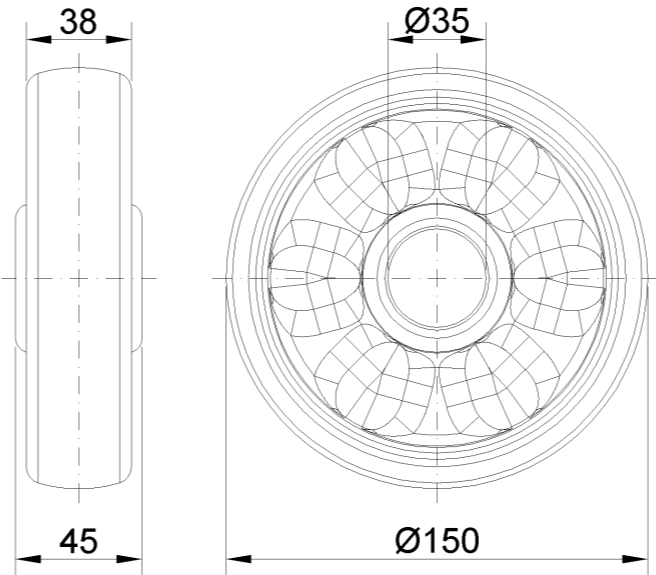
Technical Data

<input checked="" type="radio"/> Imperial <input type="radio"/> Metric	
Wheel Diameter(D)	6 "
Wheel Width(T2)	1-1/2 "
Wheel Bearing	Ball Bearing
Axle Bore(d)	—
Axle Bore(S)	1-3/8 "
Bearing Bore Depth(t)	—
Hub Lenth(T1)	1-13/16 "
Hardness Of Tread	87±5° Shore A
Load Capacity (Dynamic)	507lbs
Load Capacity (Static)	761lbs
Temperature	-4°F to +140°F
Electrical Conductivity	N/A
Anti-Static	N/A
Weight	1.0lbs
Standard	ISO22883

Advantages at a glance

Rolling Resistance	● ● ● ● ○
Operating Noise	● ● ● ● ○
Floor Surface Preservation	● ● ● ● ●

2D Dimensional Drawing of Single Wheel



\* For any deviation between metric and imperial spec, please refer to the metric spec.