



PPR Series

PPR Wheel (Black-Black Flat) Wheel Diameter × Wheel Width 75×21mm

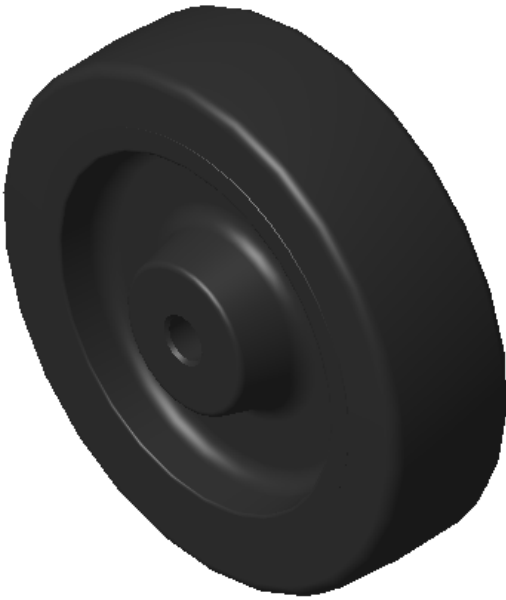
EAN

KS-12022603090600

Easy to protect the ground, Non-Markings, Easy To Maneuver, and can withstand heavy loads.  
Low rolling and Swivel Resistance, resistant to corrosion from many corrosive substances.  
Color: Black, with central tube.

Wheel core: High-quality impact-resistant polypropylene  
Wheel tread: Thermoplastic rubber elastomer (TPR)  
Bearing: Center tube type

Drawings are for reference only and may differ from the product



Picture may differ from original product

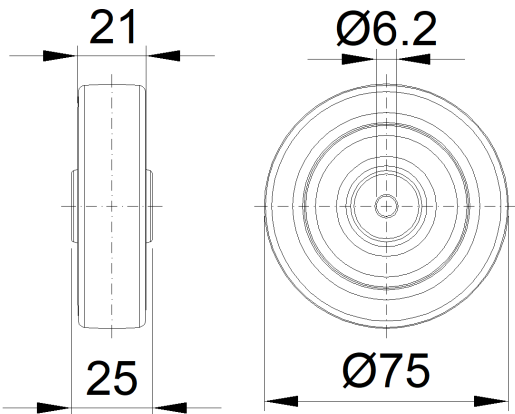
Technical Data

<input checked="" type="radio"/> Metric <input type="radio"/> Imperial	
Wheel Diameter(D)	75mm
Wheel Width(T2)	21mm
Wheel Bearing	Plain Bearing
Axle Bore(d)	6.2mm
Axle Bore(S)	—
Bearing Bore Depth(t)	—
Hub Lenth(T1)	25mm
Hardness Of Tread	82±5° Shore A
Load Capacity (Dynamic)	40kgs
Load Capacity (Static)	60kgs
Temperature	-20°C to +60°C
Electrical Conductivity	N/A
Anti-Static	N/A
Weight	0.06kgs
Standard	ISO22883

Advantages at a glance

Rolling Resistance	● ● ● ● ● ○
Operating Noise	● ● ● ● ● ○
Floor Surface Preservation	● ● ● ● ● ●

2D Dimensional Drawing of Single Wheel



\* For any deviation between metric and imperial spec, please refer to the metric spec.