



PPR Series

PPR Wheel (Pearlescent Dark Gray Flat) Wheel Diameter × Wheel Width 75 × 25mm

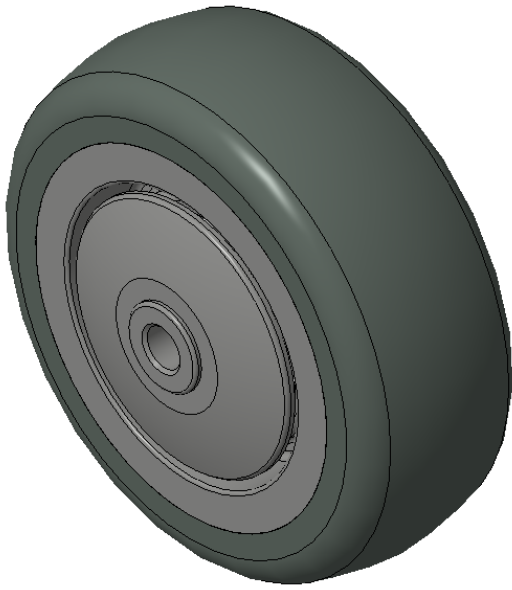
EAN

KS-12022603103573

Indentation-free, quiet operation, equipped with wheel covers
High-Quality single wheel manufactured using Injection Molding Process

Wheel core: Made of high-quality impact-resistant polypropylene
Wheel tread: Thermoplastic rubber elastomer (TPR)
Bearing: Precision ball bearing

Drawings are for reference only and may differ from the product



Picture may differ from original product

Technical Data

<input checked="" type="radio"/> Imperial <input type="radio"/> Metric	
Wheel Diameter(D)	3 "
Wheel Width(T2)	1-1/16 "
Wheel Bearing	Without Bearing
Axle Bore(d)	1/4 "
Axle Bore(S)	1-3/8 "
Bearing Bore Depth(t)	
Hardness Of Tread	82±5° Shore A
Load Capacity (Dynamic)	154lbs
Load Capacity (Static)	231lbs
Temperature	-4°F to +140°F
Electrical Conductivity	N/A
Anti-Static	N/A
Weight	0.1lbs
Standard	ISO22883

Advantages at a glance

Rolling Resistance	● ● ● ● ○
Operating Noise	● ● ● ● ○
Floor Surface Preservation	● ● ● ● ●

2D Dimensional Drawing of Single Wheel

* For any deviation between metric and imperial spec, please refer to the metric spec.