



NPPR Series

NPPR Wheel (Pearlescent Green-Grey) Wheel Diameter × Wheel Width 100×23mm

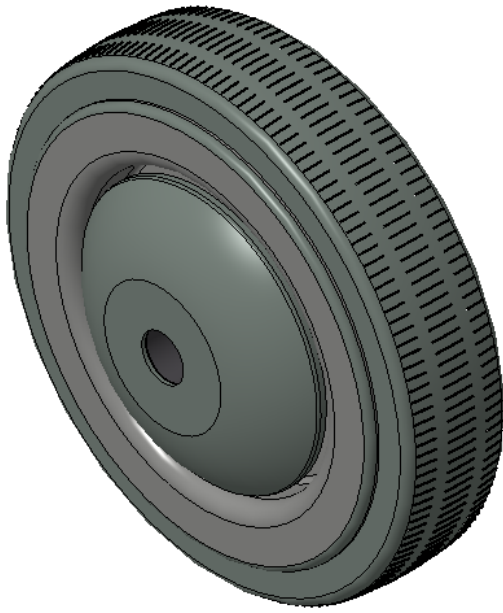
EAN

KS-12022604094171

Easy to protect floors, Non-Marking, Easy To Maneuver, and capable of handling heavy loads. Low rolling and Swivel Resistance, Resistant To many other aggressive substances.. Color: Pearlescent green-gray, with Plain Bearing and Dust Cap.

Wheel core: Made of high-quality impact-resistant polypropylene
Wheel tread: Thermoplastic rubber elastomer (TPR)
Bearing: mid-tube type

Drawings are for reference only and may differ from the product



Picture may differ from original product

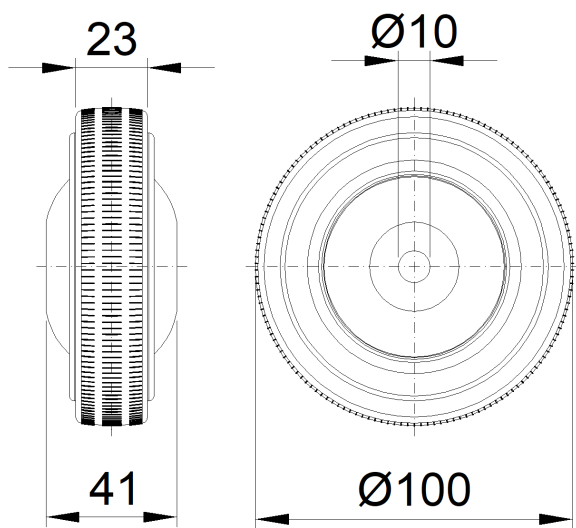
Technical Data

<input checked="" type="radio"/> Metric <input type="radio"/> Imperial	
Wheel Diameter(D)	100mm
Wheel Width(T2)	23mm
Wheel Bearing	Plain Bearing
Axle Bore(d)	10mm
Axle Bore(S)	—
Bearing Bore Depth(t)	—
Hub Lenth(T1)	41mm
Hardness Of Tread	82±5° Shore A
Load Capacity (Dynamic)	80kgs
Load Capacity (Static)	120kgs
Temperature	-20°C to +60°C
Electrical Conductivity	N/A
Anti-Static	N/A
Weight	1.22kgs
Standard	ISO22883

Advantages at a glance

Rolling Resistance	● ● ● ● ○
Operating Noise	● ● ● ● ○
Floor Surface Preservation	● ● ● ● ●

2D Dimensional Drawing of Single Wheel



* For any deviation between metric and imperial spec, please refer to the metric spec.