

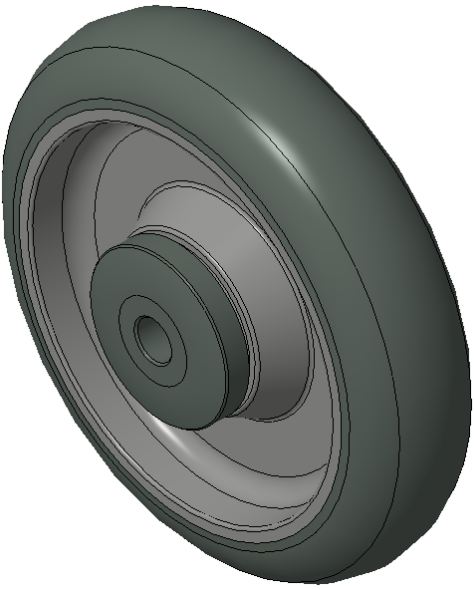


PPR Series

PPR Wheel (Pearlescent Dark Gray Large Arc) Wheel Diameter × Wheel Width 125 × 31mm

A

KS-12022605131271



Picture may differ from original product

Easy to Floor Surface Preservation, Non-Markings, Easy To Maneuver, and can withstand heavy loads.  
Low rolling and Swivel Resistance, resistant to corrosion from many corrosive substances.  
Color: Pearlescent dark gray, includes bearing and Dust Cap.

Wheel Center: High-quality impact-resistant polypropylene  
Outer packaging: Thermoplastic rubber elastomer (TPR)  
Bearing: Ball bearing

Drawings are for reference only and may differ from the product

Technical Data

☒ Metric ☐ Imperial

Wheel Diameter(D)125mm

Wheel Width(T2)31mm

Wheel BearingBall Bearing

Axle Bore(d)10mm

Axle Bore(S)—

Bearing Bore Depth(t)—

Hub Lenth(T1)46mm

Hardness Of Tread82±5° Shore A

Load Capacity (Dynamic)100kgs

Load Capacity (Static)150kgs

Temperature-20°C to +60°C

Electrical ConductivityN/A

Anti-StaticN/A

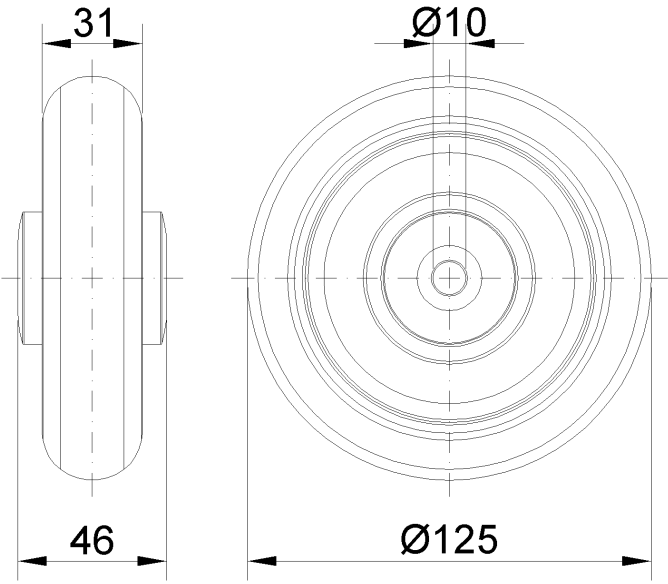
Weight0.25kgs

StandardISO22883

Advantages at a glance

Rolling Resistance●●●●○  
Operating Noise●●●●○  
Floor Surface Preservation●●●●●

2D Dimensional Drawing of Single Wheel



\* For any deviation between metric and imperial spec, please refer to the metric spec.