



WPPR Series

WPPR Wheel (Pearlescent Dark Gray) Wheel Diameter × Wheel Width 125 × 38mm

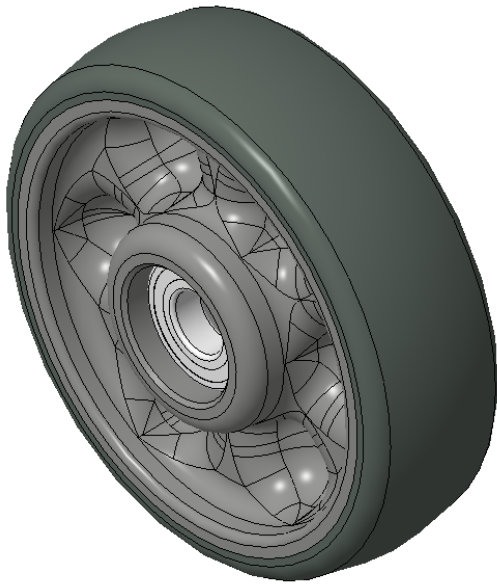
A

KS-1202260515W671

Easy to Floor Surface Preservation, Non-Markings, Easy To Maneuver, and can withstand heavy loads.
Low rolling and Swivel Resistance, resistant to corrosion from many corrosive substances.
Color: Pearlescent dark gray, with bearing.

Wheel Center: High-quality impact-resistant polypropylene
Outer packaging: Thermoplastic rubber elastomer (TPR)
Bearing: Ball bearing

Drawings are for reference only and may differ from the product



Picture may differ from original product

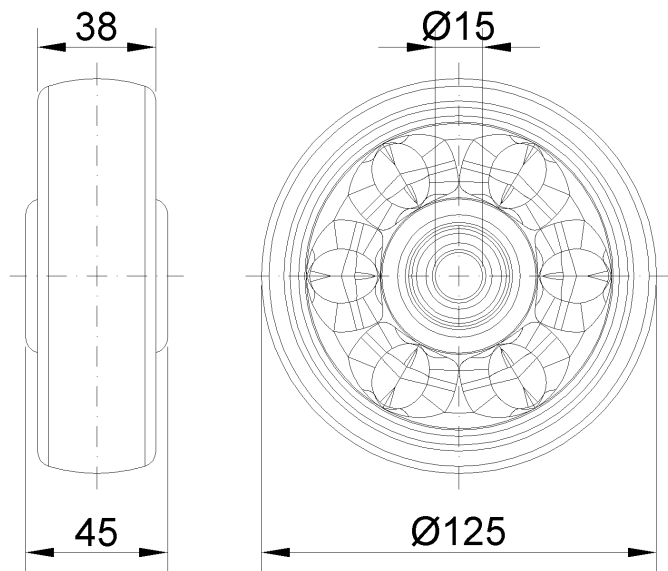
Technical Data

<input checked="" type="radio"/> Metric <input type="radio"/> Imperial	
Wheel Diameter(D)	125mm
Wheel Width(T2)	38mm
Wheel Bearing	Ball Bearing
Axle Bore(d)	15mm
Axle Bore(S)	—
Bearing Bore Depth(t)	—
Hub Lenth(T1)	45mm
Hardness Of Tread	82±5° Shore A
Load Capacity (Dynamic)	115kgs
Load Capacity (Static)	172.5kgs
Temperature	-20°C to +60°C
Electrical Conductivity	N/A
Anti-Static	N/A
Weight	0.34kgs
Standard	ISO22883

Advantages at a glance

Rolling Resistance	● ● ● ● ○
Operating Noise	● ● ● ● ○
Floor Surface Preservation	● ● ● ● ●

2D Dimensional Drawing of Single Wheel



* For any deviation between metric and imperial spec, please refer to the metric spec.