



PPR Series

PPR Wheel (Gray Light Gray Arc) Wheel Diameter×Wheel Width 125×50mm

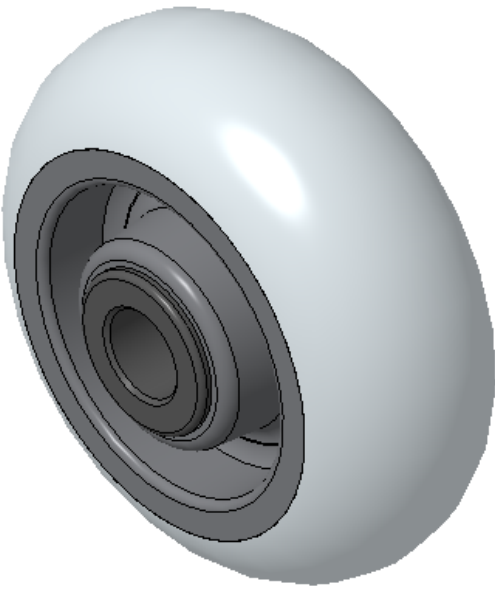
EAN

KS-12022605208175

Easy to protect the ground, Non-Markings, Easy To Maneuver, and can withstand heavy loads.
Low rolling and Swivel Resistance, resistant to corrosion from many corrosive substances.
Color: Light gray, with central tube.

Wheel core: Made of high-quality impact-resistant polypropylene
Wheel tread: Thermoplastic rubber elastomer (TPR)
Bearing: Center tube type

Drawings are for reference only and may differ from the product



Picture may differ from original product

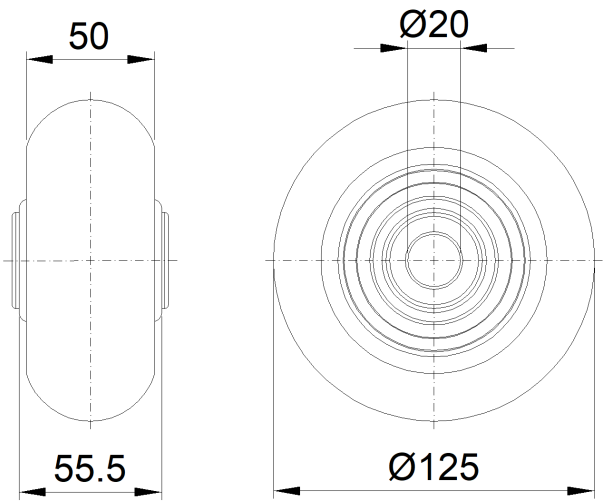
Technical Data

<input checked="" type="radio"/> Metric <input type="radio"/> Imperial	
Wheel Diameter(D)	125mm
Wheel Width(T2)	50mm
Wheel Bearing	Without Bearing
Axle Bore(d)	20mm
Axle Bore(S)	—
Bearing Bore Depth(t)	—
Hub Lenth(T1)	55.5mm
Hardness Of Tread	82±5° Shore A
Load Capacity (Dynamic)	140kgs
Load Capacity (Static)	210kgs
Temperature	-20°C to +60°C
Electrical Conductivity	N/A
Anti-Static	N/A
Weight	0.45kgs
Standard	ISO22883

Advantages at a glance

Rolling Resistance	● ● ● ● ○
Operating Noise	● ● ● ● ○
Floor Surface Preservation	● ● ● ● ●

2D Dimensional Drawing of Single Wheel



* For any deviation between metric and imperial spec, please refer to the metric spec.