



PPR Series

PPR Wheel (Middle Tube Type) (Gray-Light Gray) Wheel Diameter × Wheel Width 151 × 50mm

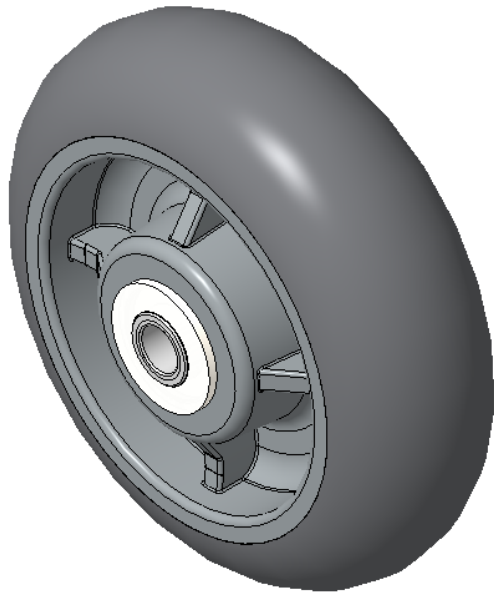
A

KS-12022606208172

Easy to Floor Surface Preservation, Non-Markings, Easy To Maneuver, and can withstand heavy loads.  
Low rolling and Swivel Resistance, resistant to corrosion from many corrosive substances.  
Color: Light gray, includes bearings and pads.

Wheel Tread: High-quality impact-resistant polypropylene  
Outer packaging: Thermoplastic rubber elastomer (TPR)  
Bearing: Long ball bearing

Drawings are for reference only and may differ from the product



Picture may differ from original product

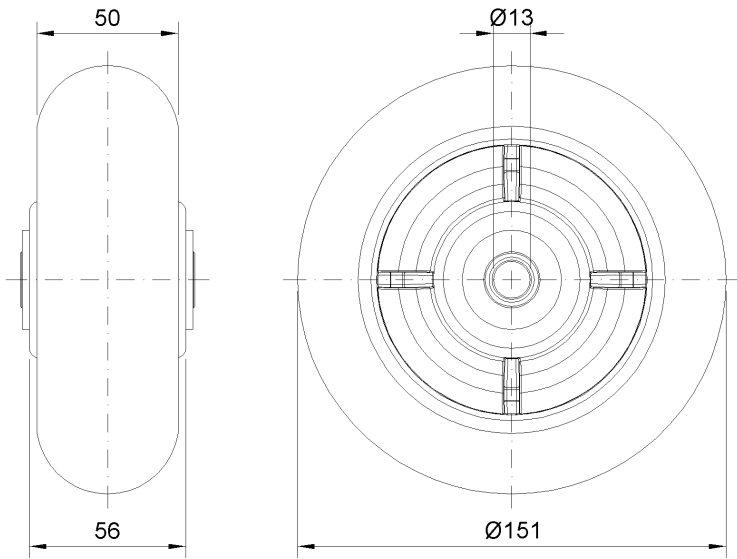
Technical Data

<input checked="" type="radio"/> Metric <input type="radio"/> Imperial	
Wheel Diameter(D)	151mm
Wheel Width(T2)	50mm
Wheel Bearing	Annular Ball Bearing
Axle Bore(d)	13mm
Axle Bore(S)	—
Bearing Bore Depth(t)	—
Hub Lenth(T1)	56mm
Hardness Of Tread	82±5° Shore A
Load Capacity (Dynamic)	160kgs
Load Capacity (Static)	240kgs
Temperature	-20°C to +60°C
Electrical Conductivity	N/A
Anti-Static	N/A
Weight	0.94kgs
Standard	ISO22883

Advantages at a glance

Rolling Resistance	● ● ● ● ○
Operating Noise	● ● ● ● ○
Floor Surface Preservation	● ● ● ● ●

2D Dimensional Drawing of Single Wheel



\* For any deviation between metric and imperial spec, please refer to the metric spec.