



PPR Series

PPR Wheel (Middle Tube Type) (Deep Black) Wheel Diameter × Wheel Width 151 × 50mm

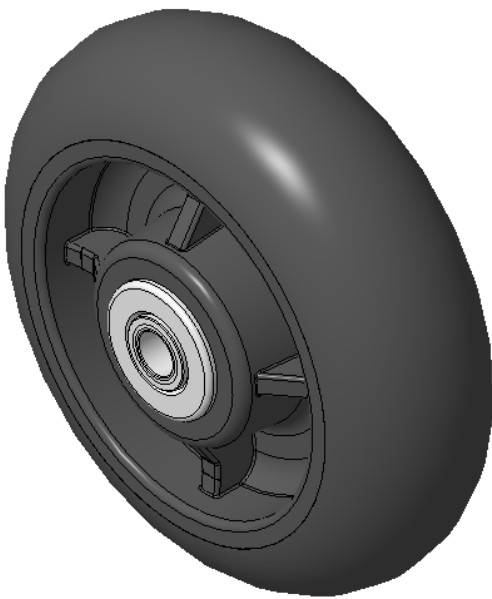
A

KS-12022606208972

Easy to Floor Surface Preservation, Non-Markings, Easy To Maneuver, and can withstand heavy loads.  
Low rolling and Swivel Resistance, resistant to corrosion from many corrosive substances.  
Color: Black, with Telling bearing.

Wheel Tread: High-quality impact-resistant polypropylene  
Outer packaging: Thermoplastic rubber elastomer (TPR)  
Bearings: —

Drawings are for reference only and may differ from the product



Picture may differ from original product

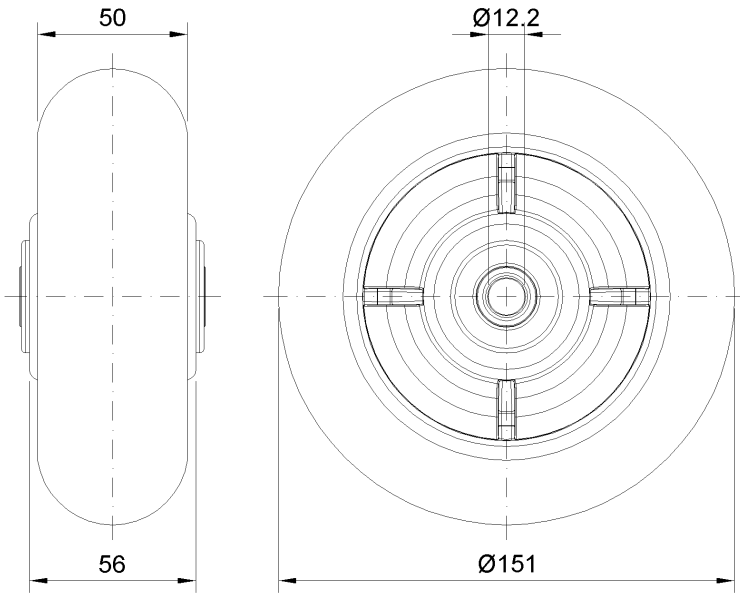
Technical Data

|  |                 |
|--|-----------------|
| <input checked="" type="radio"/> Imperial <input type="radio"/> Metric |                 |
| Wheel Diameter(D)  | 6               |
| Wheel Width(T2)  | 2 "             |
| Wheel Bearing  | Without Bearing |
| Axle Bore(d)   | 9/16 "          |
| Axle Bore(S)   | —               |
| Bearing Bore Depth(t)  | —               |
| Hub Lenth(T1)  | 2-1/4 "         |
| Hardness Of Tread  | 82±5° Shore A   |
| Load Capacity (Dynamic)  | 353lbs          |
| Load Capacity (Static)   | 529lbs          |
| Temperature  | -4°F to +140°F  |
| Electrical Conductivity  | N/A             |
| Anti-Static  | N/A             |
| Weight   | 1.7lbs          |
| Standard   | ISO22883        |

Advantages at a glance

|                            |           |
|----------------------------|-----------|
| Rolling Resistance         | ● ● ● ● ○ |
| Operating Noise            | ● ● ● ● ○ |
| Floor Surface Preservation | ● ● ● ● ● |

2D Dimensional Drawing of Single Wheel



\* For any deviation between metric and imperial spec, please refer to the metric spec.