



PPR Series

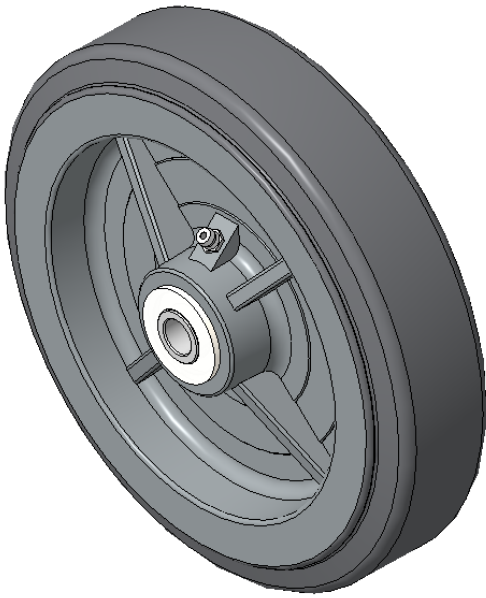
PPR Wheel (Gray-Light Gray, Flat) Wheel Diameter × Wheel Width 202 × 50mm

A
KS-12022608201174

Easy to protect floors, Non-Marking, Easy To Maneuver, and capable of handling heavy loads. Low rolling and Swivel Resistance, Resistant To many other aggressive substances.. Color: Light gray, with a medium-length tube.

Wheel Tread: High-quality impact-resistant polypropylene
Wheel Center: Thermoplastic rubber elastomer (TPR)
Bearing: Long ball bearing

Drawings are for reference only and may differ from the product



Picture may differ from original product

Technical Data

<input checked="" type="radio"/> Metric <input type="radio"/> Imperial	
Wheel Diameter(D)	202mm
Wheel Width(T2)	50mm
Wheel Bearing	Annular Ball Bearing
Axle Bore(d)	13mm
Axle Bore(S)	—
Bearing Bore Depth(t)	—
Hub Lenth(T1)	62mm
Hardness Of Tread	82±5° Shore A
Load Capacity (Dynamic)	280kgs
Load Capacity (Static)	420kgs
Temperature	-20°C to +60°C
Electrical Conductivity	N/A
Anti-Static	N/A
Weight	1.12kgs
Standard	ISO22883

Advantages at a glance

Rolling Resistance	● ● ● ● ○
Operating Noise	● ● ● ● ○
Floor Surface Preservation	● ● ● ● ●

2D Dimensional Drawing of Single Wheel

* For any deviation between metric and imperial spec, please refer to the metric spec.