



PP Series

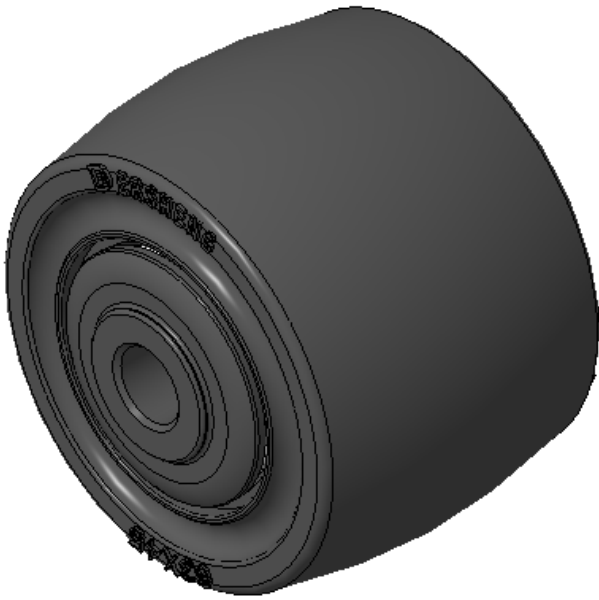
PP Wheel (Black-Black) Wheel Diameter × Wheel Width 62.5 × 45mm

D
KS-12022952181373

Good Heat Resistance, Rigid yet tough, fatigue-resistant, and stress-cracking resistant. Unaffected by humidity, resistant to corrosion, oil, acids, alkalis, and other solven. Odorless and recyclable, with Heavy Load and low Rolling Resistance.
Color: Black

Wheel Center: High-quality impact-resistant polypropylene
Wheel Tread: High-quality impact-resistant polypropylene
Bearing: Ball bearing

Drawings are for reference only and may differ from the product



Picture may differ from original product

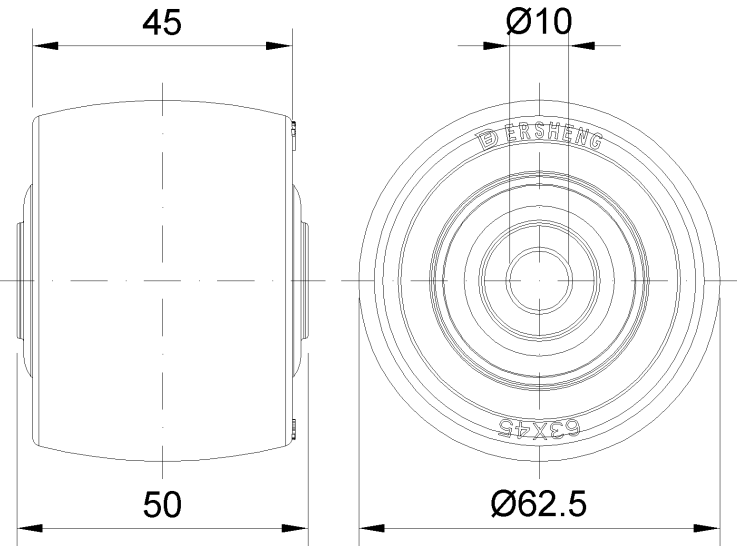
Technical Data

<input checked="" type="radio"/> Imperial <input type="radio"/> Metric	
Wheel Diameter(D)	2-1/2 "
Wheel Width(T2)	15/16 "
Wheel Bearing	Ball Bearing
Axle Bore(d)	3/8 "
Axle Bore(S)	—
Bearing Bore Depth(t)	—
Hub Lenth(T1)	2 "
Hardness Of Tread	65±5° Shore D
Load Capacity (Dynamic)	66lbs
Load Capacity (Static)	99lbs
Temperature	14°F to +140°F
Electrical Conductivity	N/A
Anti-Static	N/A
Weight	0.2lbs
Standard	ISO22883

Advantages at a glance

Rolling Resistance	● ● ● ● ●
Operating Noise	● ● ● ○ ○
Floor Surface Preservation	● ● ● ○ ○

2D Dimensional Drawing of Single Wheel



* For any deviation between metric and imperial spec, please refer to the metric spec.