



Resolute Rubber Wheel Series

Resolute (Pearlescent dark gray) Wheel Diameter x Wheel Width 75 x 27mm

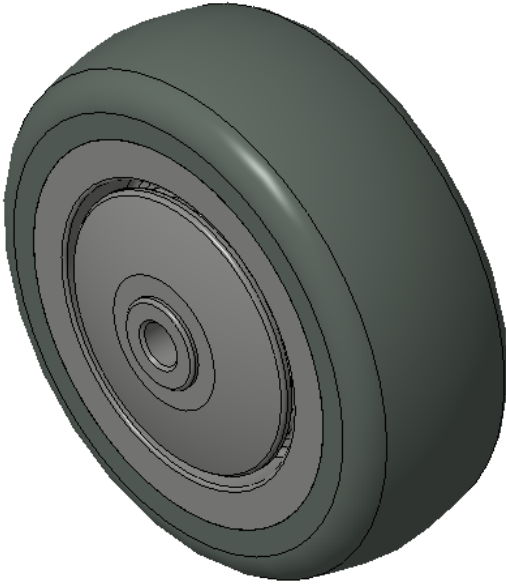
A

KS-12024503103573

Easy to Floor Surface Preservation, Non-Markings, Easy To Maneuver, and can withstand heavy loads.
Low rolling and Swivel Resistance, resistant to corrosion from many corrosive substances.
Color: Dark gray, includes bearing and Dust Cap.

Wheel Tread: High-quality impact-resistant polypropylene
Outer packaging: Thermoplastic rubber elastomer (TPR)
Bearing: Ball bearing

Drawings are for reference only and may differ from the product



Picture may differ from original product

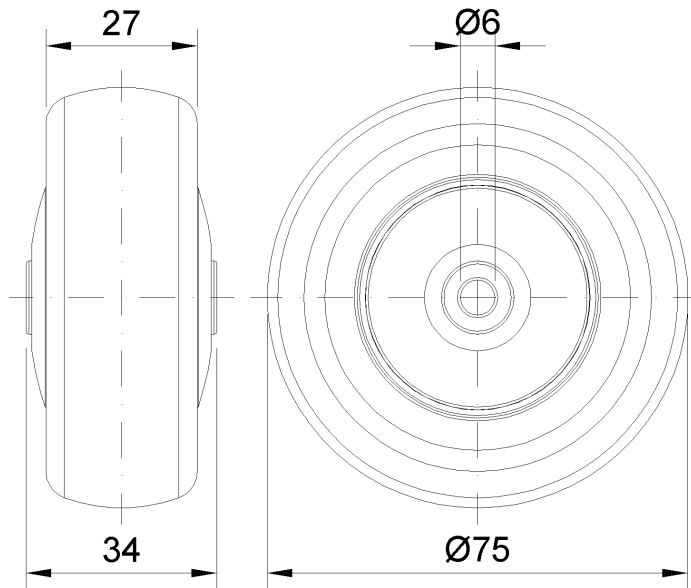
Technical Data

<input checked="" type="radio"/> Metric <input type="radio"/> Imperial	
Wheel Diameter(D)	75mm
Wheel Width(T2)	27mm
Wheel Bearing	Ball Bearing
Axle Bore(d)	6mm
Axle Bore(S)	—
Bearing Bore Depth(t)	—
Hub Lenth(T1)	34mm
Hardness Of Tread	72±5° Shore A
Load Capacity (Dynamic)	56kgs
Load Capacity (Static)	84kgs
Temperature	-20°C to +60°C
Electrical Conductivity	N/A
Anti-Static	N/A
Weight	0.12kgs
Standard	ISO22883

Advantages at a glance

Rolling Resistance	● ● ● ● ●
Operating Noise	● ● ● ● ●
Floor Surface Preservation	● ● ● ● ●

2D Dimensional Drawing of Single Wheel



* For any deviation between metric and imperial spec, please refer to the metric spec.