

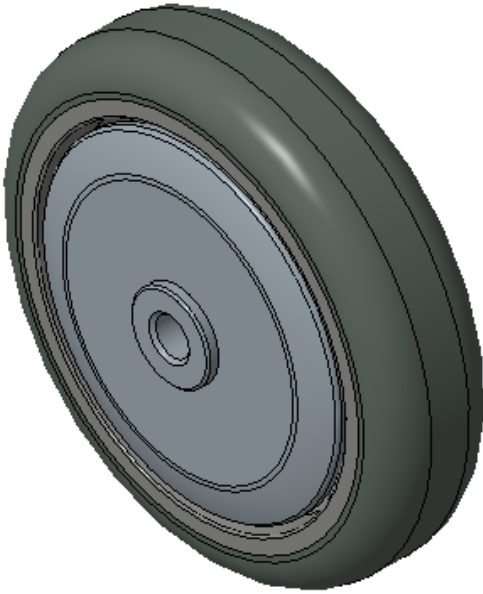


PPR Series

Classic All-Effect Wheel (Pearlescent Dark Gray Arc) Wheel Diameter × Wheel Width  
100×24mm

EAN

KS-12024504105172



Picture may differ from original product

Easy to Floor Surface Preservation, Non-Markings, Easy To Maneuver, and can withstand heavy loads.  
Low rolling and Swivel Resistance, resistant to corrosion from many corrosive substances.  
Color: Pearlescent dark gray, includes bearing and Dust Cap.

Wheel core: Made of high-quality impact-resistant polypropylene  
Wheel tread: Thermoplastic rubber elastomer (TPR)  
Bearing: Precision ball bearing

Drawings are for reference only and may differ from the product

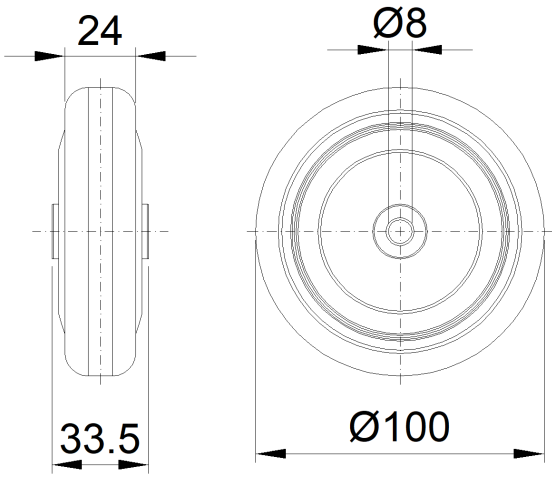
Technical Data

|  |                |
|--|----------------|
| <input checked="" type="radio"/> Metric <input type="radio"/> Imperial |                |
| Wheel Diameter(D)  | 100mm          |
| Wheel Width(T2)  | 24mm           |
| Wheel Bearing  | Ball Bearing   |
| Axle Bore(d)   | 8mm            |
| Axle Bore(S)   | —              |
| Bearing Bore Depth(t)  | —              |
| Hub Lenth(T1)  | 33.5mm         |
| Hardness Of Tread  | 72±5° Shore A  |
| Load Capacity (Dynamic)  | 50kgs          |
| Load Capacity (Static)   | 75kgs          |
| Temperature  | -20°C to +60°C |
| Electrical Conductivity  | N/A            |
| Anti-Static  | N/A            |
| Weight   | 0.15kgs        |
| Standard   | ISO22883       |

Advantages at a glance

|                            |           |
|----------------------------|-----------|
| Rolling Resistance         | ● ● ● ● ● |
| Operating Noise            | ● ● ● ● ● |
| Floor Surface Preservation | ● ● ● ● ● |

2D Dimensional Drawing of Single Wheel



\* For any deviation between metric and imperial spec, please refer to the metric spec.