

W Resolute Wheel Series



W Resolute(Pearlescent dark gray) Wheel Diameter × Wheel Width 100 x 31mm

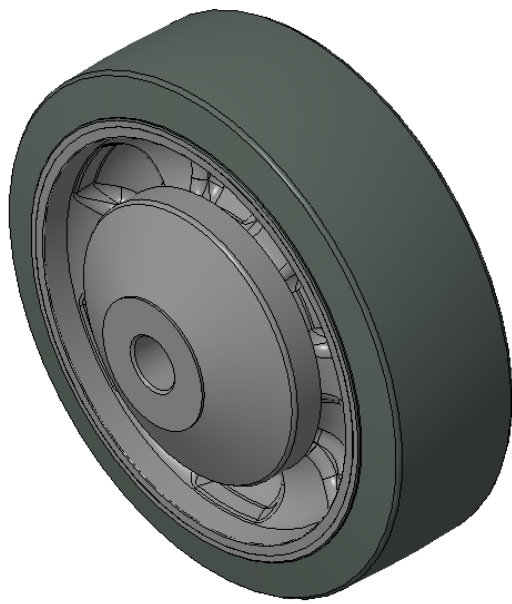
A

KS-12024504131W675

Easy to protect floors, Non-Marking, Easy To Maneuver, and capable of handling heavy loads Low rolling and Swivel Resistance, Resistant To many other aggressive substances. Color: Pearlescent dark gray, with Dust Cap

Wheel Tread: High-quality impact-resistant polypropylene
Wheel Center: Thermoplastic rubber elastomer (TPR)
Bearing: ball bearing

Drawings are for reference only and may differ from the product



Picture may differ from original product

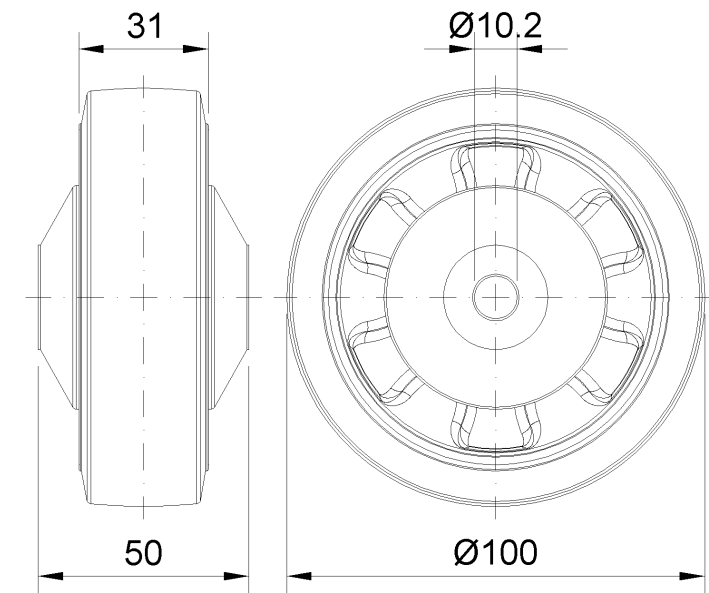
Technical Data

<input checked="" type="radio"/> Metric <input type="radio"/> Imperial	
Wheel Diameter(D)	100mm
Wheel Width(T2)	31mm
Wheel Bearing	Ball Bearing
Axle Bore(d)	10.2mm
Axle Bore(S)	— mm
Bearing Bore Depth(t)	—
Hub Lenth(T1)	50mm
Hardness Of Tread	72±5° Shore A
Load Capacity (Dynamic)	125kgs
Load Capacity (Static)	187.5kgs
Temperature	-20°C to +60°C
Electrical Conductivity	N/A
Anti-Static	N/A
Weight	0.15kgs
Standard	ISO22883

Advantages at a glance

Rolling Resistance	● ● ● ● ●
Operating Noise	● ● ● ● ●
Floor Surface Preservation	● ● ● ● ●

2D Dimensional Drawing of Single Wheel



* For any deviation between metric and imperial spec, please refer to the metric spec.