

W Resolute Wheel Series



W Resolute (Pearlescent Light Gray) Wheel Diameter × Wheel Width 100×50mm

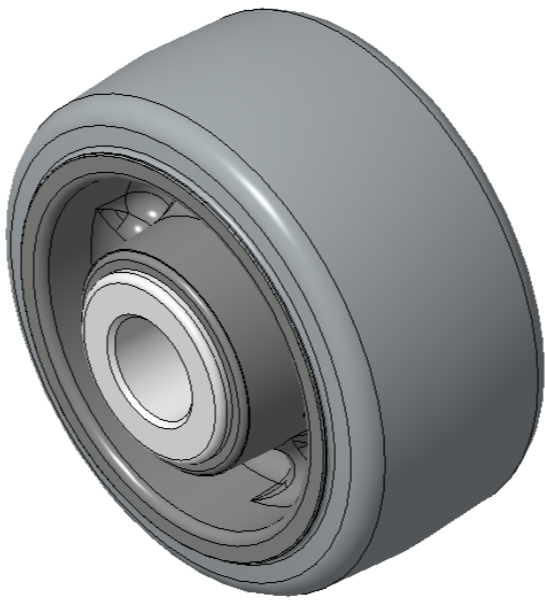
EAN

KS-1202450420W175

Easy to Floor Surface Preservation, Non-Markings, Easy To Maneuver, and can withstand heavy loads.
Low rolling and Swivel Resistance, resistant to corrosion from many corrosive substances.
Color: Pearlescent light gray, with Telling bearing.

Wheel core: High-quality impact-resistant polypropylene
Wheel tread: Thermoplastic rubber elastomer (TPR)
Bearings: Telling Bearings

Drawings are for reference only and may differ from the product



Picture may differ from original product

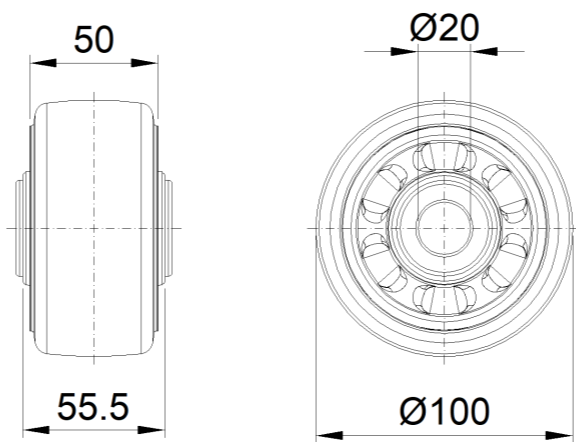
Technical Data

<input checked="" type="radio"/> Imperial <input type="radio"/> Metric	
Wheel Diameter(D)	4 "
Wheel Width(T2)	2 "
Wheel Bearing	Without Bearing
Axle Bore(d)	13/16 "
Axle Bore(S)	—
Bearing Bore Depth(t)	—
Hub Lenth(T1)	2-1/4 "
Hardness Of Tread	72±5° Shore A
Load Capacity (Dynamic)	300lbs
Load Capacity (Static)	450lbs
Temperature	-4°F to +140°F
Electrical Conductivity	N/A
Anti-Static	N/A
Weight	0.6lbs
Standard	ISO22883

Advantages at a glance

Rolling Resistance	● ● ● ● ●
Operating Noise	● ● ● ● ●
Floor Surface Preservation	● ● ● ● ●

2D Dimensional Drawing of Single Wheel



* For any deviation between metric and imperial spec, please refer to the metric spec.