

W Resolute Wheel Series



W Resolute (Pearlescent Light Gray) Wheel Diameter × Wheel Width 100×50mm

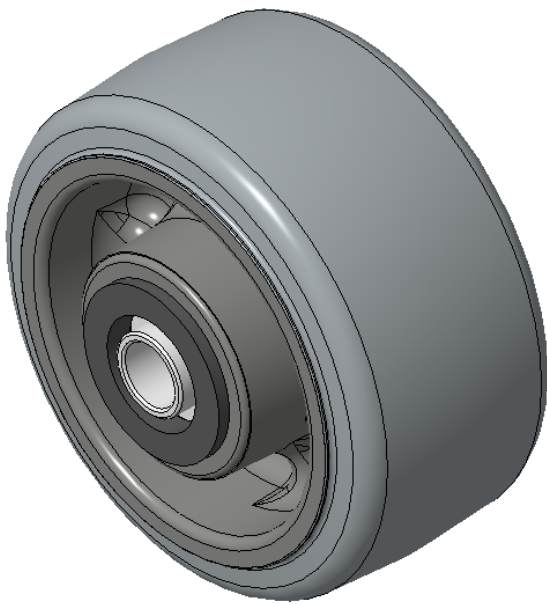
EAN

KS-1202450420W177

Easy to Floor Surface Preservation, Non-Markings, Easy To Maneuver, and can withstand heavy loads.
Low rolling and Swivel Resistance, resistant to corrosion from many corrosive substances.
Color: Pearlescent light gray, includes bearing and pad.

Wheel core: High-quality impact-resistant polypropylene
Wheel tread: Thermoplastic rubber elastomer (TPR)
Bearing: Precision ball bearing

Drawings are for reference only and may differ from the product



Picture may differ from original product

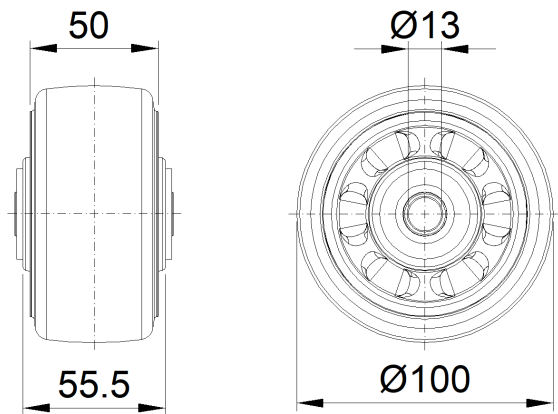
Technical Data

| | |
|--|----------------------|
| <input checked="" type="radio"/> Metric <input type="radio"/> Imperial | |
| Wheel Diameter(D) | 100mm |
| Wheel Width(T2) | 50mm |
| Wheel Bearing | Annular Ball Bearing |
| Axle Bore(d) | 13mm |
| Axle Bore(S) | — |
| Bearing Bore Depth(t) | — |
| Hub Lenth(T1) | 55.5mm |
| Hardness Of Tread | 72±5° Shore A |
| Load Capacity (Dynamic) | 136kgs |
| Load Capacity (Static) | 204kgs |
| Temperature | -20°C to +60°C |
| Electrical Conductivity | N/A |
| Anti-Static | N/A |
| Weight | 0.40kgs |
| Standard | ISO22883 |

Advantages at a glance

| | |
|----------------------------|-----------|
| Rolling Resistance | ● ● ● ● ● |
| Operating Noise | ● ● ● ● ● |
| Floor Surface Preservation | ● ● ● ● ● |

2D Dimensional Drawing of Single Wheel



* For any deviation between metric and imperial spec, please refer to the metric spec.