



MRC Series

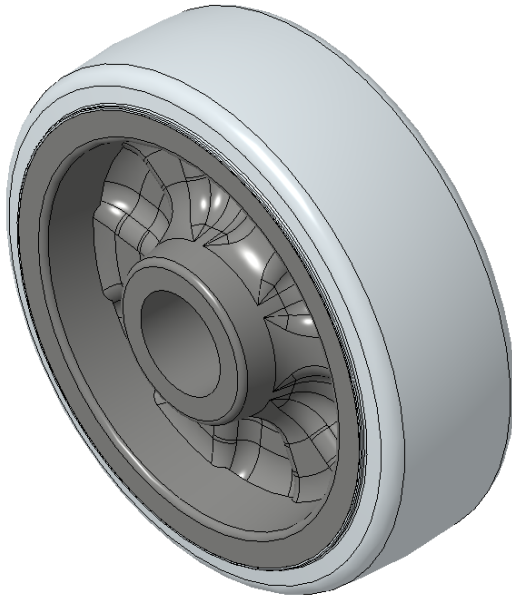
W Resolute (pearl dark gray) Wheel Diameter x Wheel Width 152 x 50mm

EAN
KS-1202450620W100K

Non-marking, quiet, and equipped with wheel covers,
High-Quality wheels manufactured using injection molding

Wheel core: Made of high-quality impact-resistant polypropylene
Wheel tread: Thermoplastic rubber elastomer (TPR)
Bearing: mid-tube type

Drawings are for reference only and may differ from the product



Picture may differ from original product

Technical Data

<input checked="" type="radio"/> Metric <input type="radio"/> Imperial	
Wheel Diameter(D)	152mm
Wheel Width(T2)	50mm
Wheel Bearing	Roller Bearing
Axle Bore(d)	30.2mm
Axle Bore(S)	56mm
Bearing Bore Depth(t)	
Hardness Of Tread	72±5° Shore A
Load Capacity (Dynamic)	250kgs
Load Capacity (Static)	375kgs
Temperature	-20°C to +60°C
Electrical Conductivity	N/A
Anti-Static	N/A
Weight	0.56kgs
Standard	ISO22883

Advantages at a glance

Rolling Resistance	● ● ● ● ●
Operating Noise	● ● ● ● ●
Floor Surface Preservation	● ● ● ● ●

2D Dimensional Drawing of Single Wheel

* For any deviation between metric and imperial spec, please refer to the metric spec.