

Blue Resilient Resolute Rubber Wheel Series



Full-Effect Elastic Wheel Set (Black & Blue) Wheel Diameter × Wheel Width 160×48mm

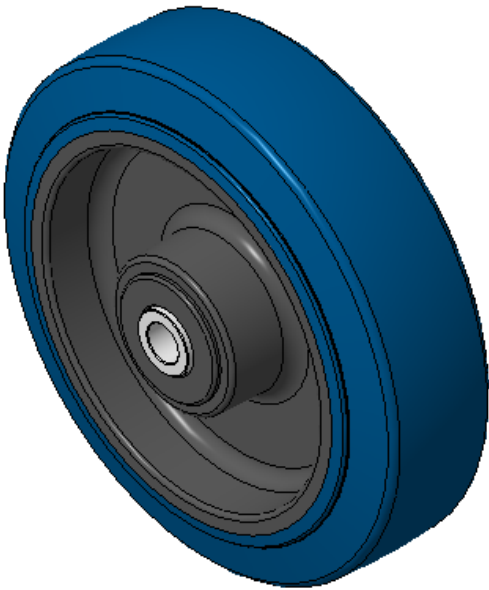
EAN

KS-12024536191173

Easy to Floor Surface Preservation, Non-Markings, Easy To Maneuver, and can withstand heavy loads.
Low rolling and Swivel Resistance, resistant to corrosion from many corrosive substances.
Color: Black/Blue, includes bearing + tube + gasket.

Wheel core: High-quality impact-resistant polypropylene
Wheel tread: Thermoplastic rubber elastomer (TPR)
Bearing: Precision ball bearing

Drawings are for reference only and may differ from the product



Picture may differ from original product

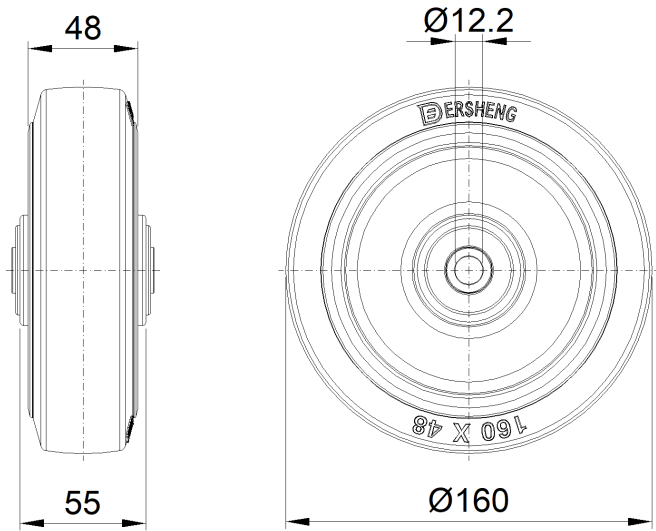
Technical Data

<input checked="" type="radio"/> Metric <input type="radio"/> Imperial	
Wheel Diameter(D)	160mm
Wheel Width(T2)	48mm
Wheel Bearing	Annular Ball Bearing
Axle Bore(d)	12.2mm
Axle Bore(S)	—
Bearing Bore Depth(t)	—
Hub Lenth(T1)	55mm
Hardness Of Tread	72±5° Shore A
Load Capacity (Dynamic)	300kgs
Load Capacity (Static)	450kgs
Temperature	-20°C to +60°C
Electrical Conductivity	N/A
Anti-Static	N/A
Weight	0.75kgs
Standard	ISO22883

Advantages at a glance

Rolling Resistance	● ● ● ● ●
Operating Noise	● ● ● ● ●
Floor Surface Preservation	● ● ● ● ●

2D Dimensional Drawing of Single Wheel



* For any deviation between metric and imperial spec, please refer to the metric spec.