

Blue Resilient Resolute Rubber Wheel Series



All-Effect Elastic Wheel Set (Black-Blue) Wheel Diameter × Wheel Width 160×48mm

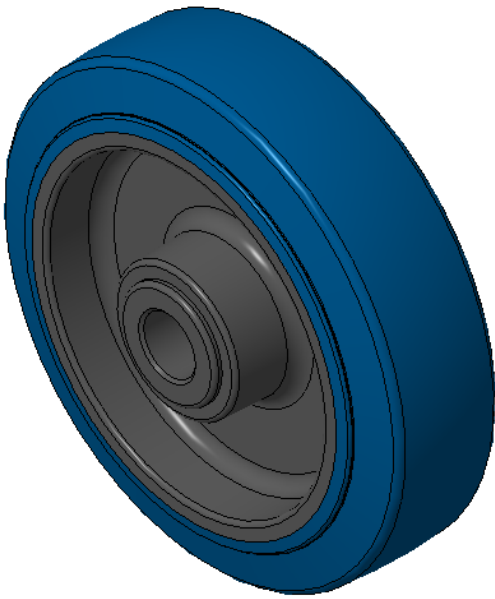
EAN

KS-12024536191178

Easy to Floor Surface Preservation, Non-Markings, Easy To Maneuver, and can withstand heavy loads.  
Low rolling and Swivel Resistance, resistant to corrosion from many corrosive substances.  
Color: Black/Blue, with Telling bearing.

Wheel core: High-quality impact-resistant polypropylene  
Wheel tread: Thermoplastic rubber elastomer (TPR)  
Bearings: Telling Bearings

Drawings are for reference only and may differ from the product



Picture may differ from original product

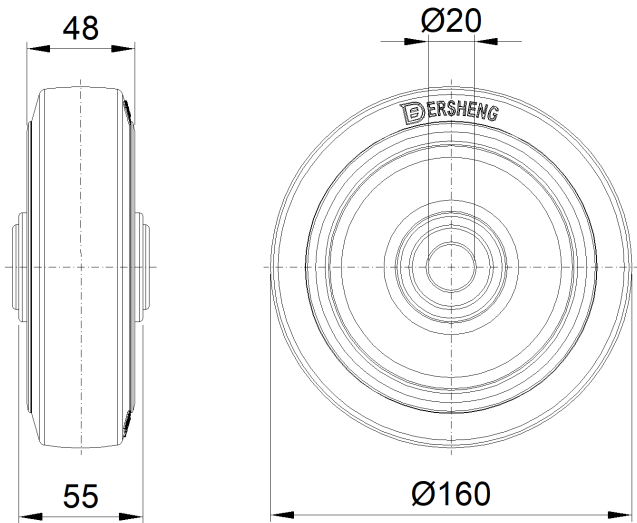
Technical Data

<input checked="" type="radio"/> Metric <input type="radio"/> Imperial	
Wheel Diameter(D)	160mm
Wheel Width(T2)	48mm
Wheel Bearing	Without Bearing
Axle Bore(d)	20mm
Axle Bore(S)	—
Bearing Bore Depth(t)	—
Hub Lenth(T1)	55mm
Hardness Of Tread	72±5° Shore A
Load Capacity (Dynamic)	300kgs
Load Capacity (Static)	450kgs
Temperature	-20°C to +60°C
Electrical Conductivity	N/A
Anti-Static	N/A
Weight	0.60kgs
Standard	ISO22883

Advantages at a glance

Rolling Resistance	● ● ● ● ●
Operating Noise	● ● ● ● ●
Floor Surface Preservation	● ● ● ● ●

2D Dimensional Drawing of Single Wheel



\* For any deviation between metric and imperial spec, please refer to the metric spec.