



HDR & WHDR Series

WHDR (pearl light gray) Wheel Diameter x Wheel Width 125 x 50mm

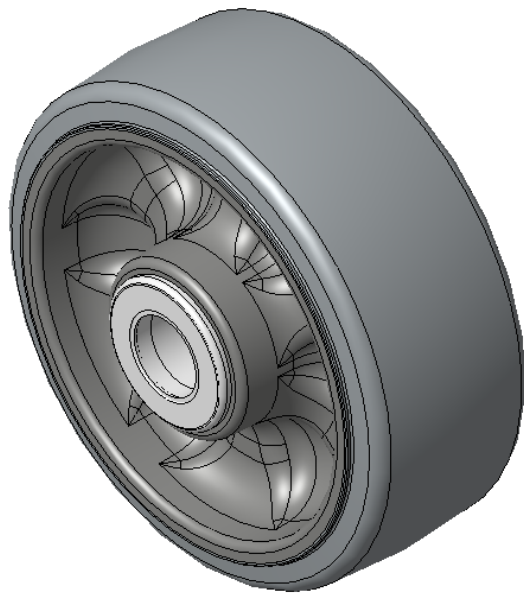
EAN

KS-1202500520W175

Easy to Floor Surface Preservation, Non-Markings, Easy To Maneuver, and can withstand heavy loads.
Low rolling and Swivel Resistance, resistant to corrosion from many corrosive substances.
Color: Pearlescent dark gray, with Telling bearing.

Wheel Tread: High-quality impact-resistant polypropylene
Outer packaging: Thermoplastic rubber elastomer (TPR)
Bearings: Telling Bearings

Drawings are for reference only and may differ from the product



Picture may differ from original product

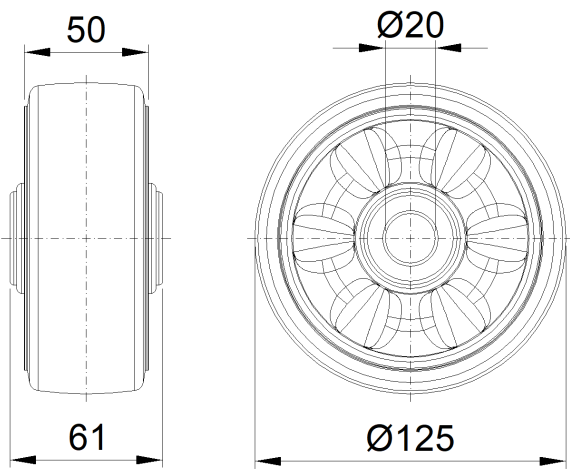
Technical Data

| | |
|--|-----------------|
| <input checked="" type="radio"/> Imperial <input type="radio"/> Metric | |
| Wheel Diameter(D) | 5 " |
| Wheel Width(T2) | 2 " |
| | |
| Wheel Bearing | Without Bearing |
| Axle Bore(d) | 9/16 " |
| Axle Bore(S) | — |
| Bearing Bore Depth(t) | — |
| Hub Lenth(T1) | 2-7/16 " |
| Hardness Of Tread | 95±5° Shore A |
| Load Capacity (Dynamic) | 750lbs |
| Load Capacity (Static) | 1124lbs |
| Temperature | -4°F to +140°F |
| Electrical Conductivity | N/A |
| Anti-Static | N/A |
| Weight | 0.6lbs |
| Standard | ISO22883 |

Advantages at a glance

| | |
|----------------------------|-----------|
| Rolling Resistance | ● ● ● ● ● |
| Operating Noise | ● ● ● ○ ○ |
| Floor Surface Preservation | ● ● ● ○ ○ |

2D Dimensional Drawing of Single Wheel



* For any deviation between metric and imperial spec, please refer to the metric spec.