



HDR & WHDR Series

WHDR (pearl light gray) Wheel Diameter x Wheel Width 200 x 50mm

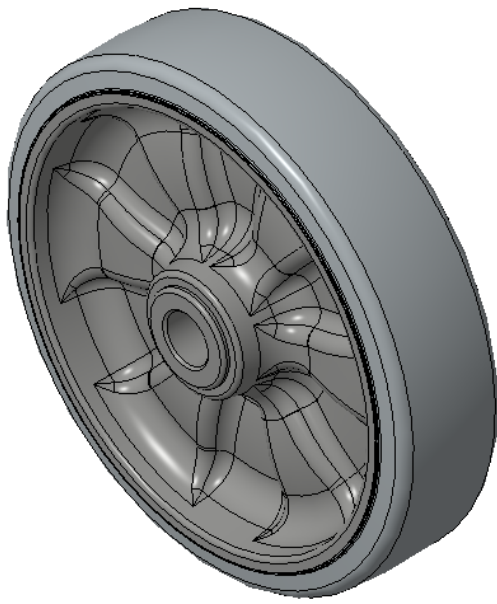
A

KS-1202500820W175

Easy to Floor Surface Preservation, Non-Markings, Easy To Maneuver, and can withstand heavy loads.
Low rolling and Swivel Resistance, resistant to corrosion from many corrosive substances.
Color: Pearlescent light gray, with Telling bearing.

Wheel Tread: High-quality impact-resistant polypropylene
Outer packaging: Thermoplastic rubber elastomer (TPR)
Bearings: Telling Bearings

Drawings are for reference only and may differ from the product



Picture may differ from original product

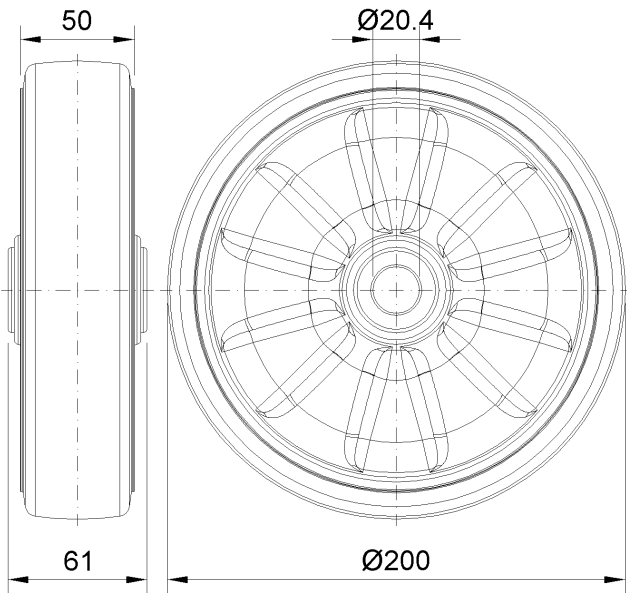
Technical Data

<input checked="" type="radio"/> Imperial <input type="radio"/> Metric	
Wheel Diameter(D)	8 "
Wheel Width(T2)	2 "
Wheel Bearing	Without Bearing
Axle Bore(d)	13/16 "
Axle Bore(S)	—
Bearing Bore Depth(t)	—
Hub Lenth(T1)	2-7/16 "
Hardness Of Tread	95±5° Shore A
Load Capacity (Dynamic)	948lbs
Load Capacity (Static)	1422lbs
Temperature	-4°F to +140°F
Electrical Conductivity	N/A
Anti-Static	N/A
Weight	3.6lbs
Standard	ISO22883

Advantages at a glance

Rolling Resistance	● ● ● ● ●
Operating Noise	● ● ● ○ ○
Floor Surface Preservation	● ● ● ○ ○

2D Dimensional Drawing of Single Wheel



* For any deviation between metric and imperial spec, please refer to the metric spec.