

Golden Steel Wheel

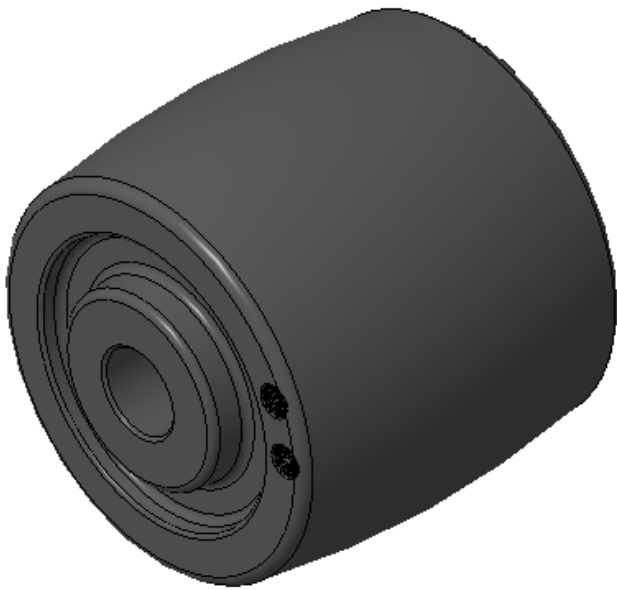
Diamond Wheel (Black-Black) Wheel Diameter × Wheel Width 50 × 45mm

D  
KS-12027102181600

Good Heat Resistance, Rigid yet tough, fatigue-resistant, and stress-cracking resistant. Unaffected by humidity, resistant to corrosion, oil, acids, alkalis, and other solven. Odorless and recyclable, with Heavy Load and low Rolling Resistance.  
Color: Black

Wheel Center: Polyketone resin engineering plastic  
Wheel Tread: Polyketone resin engineering plastics  
Bearing: No center tube

Drawings are for reference only and may differ from the product



Picture may differ from original product

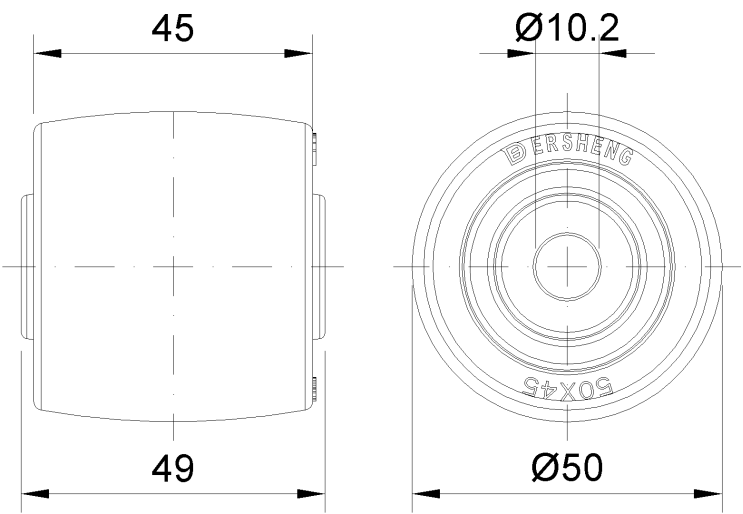
Technical Data

<input checked="" type="radio"/> Metric <input type="radio"/> Imperial	
Wheel Diameter(D)	50mm
Wheel Width(T2)	45mm
Wheel Bearing	Plain Bearing
Axle Bore(d)	—
Axle Bore(S)	10mm
Bearing Bore Depth(t)	—
Hub Lenth(T1)	49mm
Hardness Of Tread	80±5° Shore D
Load Capacity (Dynamic)	30kgs
Load Capacity (Static)	45kgs
Temperature	-25°C to +120°C
Electrical Conductivity	N/A
Anti-Static	N/A
Weight	0.02kgs
Standard	ISO22883

Advantages at a glance

Rolling Resistance	● ● ● ● ●
Operating Noise	● ● ○ ○ ○
Floor Surface Preservation	● ● ○ ○ ○

2D Dimensional Drawing of Single Wheel



\* For any deviation between metric and imperial spec, please refer to the metric spec.