

Golden Steel Wheel

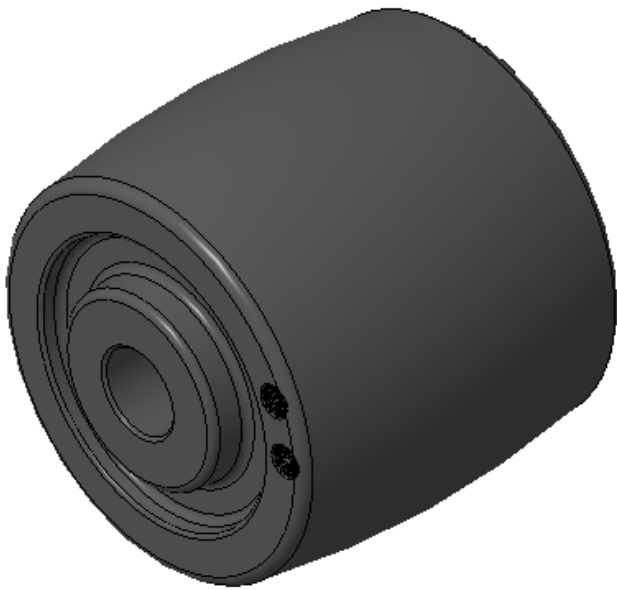
Diamond Wheel (Black-Black) Wheel Diameter × Wheel Width 50 × 45mm

D
KS-12027102181600

Good Heat Resistance, Rigid yet tough, fatigue-resistant, and stress-cracking resistant. Unaffected by humidity, resistant to corrosion, oil, acids, alkalis, and other solven. Odorless and recyclable, with Heavy Load and low Rolling Resistance.
Color: Black

Wheel Center: Polyketone resin engineering plastic
Wheel Tread: Polyketone resin engineering plastics
Bearing: No center tube

Drawings are for reference only and may differ from the product



Picture may differ from original product

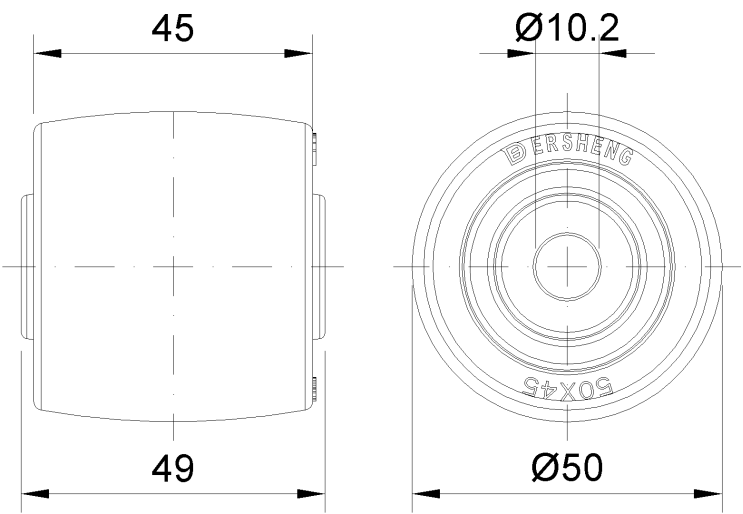
Technical Data

<input checked="" type="radio"/> Imperial <input type="radio"/> Metric	
Wheel Diameter(D)	2
Wheel Width(T2)	7/8"
Wheel Bearing	Plain Bearing
Axle Bore(d)	—
Axle Bore(S)	3/8 "
Bearing Bore Depth(t)	—
Hub Lenth(T1)	2 "
Hardness Of Tread	80±5° Shore D
Load Capacity (Dynamic)	66lbs
Load Capacity (Static)	99lbs
Temperature	-13°F to + 248°F
Electrical Conductivity	N/A
Anti-Static	N/A
Weight	0.0lbs
Standard	ISO22883

Advantages at a glance

Rolling Resistance	● ● ● ● ●
Operating Noise	● ● ○ ○ ○
Floor Surface Preservation	● ● ○ ○ ○

2D Dimensional Drawing of Single Wheel



* For any deviation between metric and imperial spec, please refer to the metric spec.