



1152 Anti-Friction Caster Series

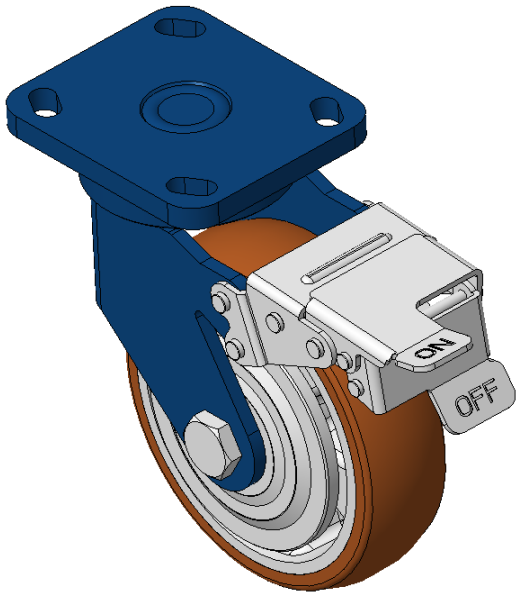
AQPU (brown) Wheel Diameter × Wheel Width 150 x 42mm

EAN
KS-9999

Equipped with front brake, With locking system Casters, Welded Caster Fork, blue paint finish.
Base plate Mounting Type, 85x70mm Bolt Hole Spacing.
Cast aluminum core, High Quality Polyurethane Wheel Tread, Cast Iron brown.
Bearings—Ball Bearings, with Dust Cap.

Wheel Tread: Hhigh-Quality Polyurethane
Wheel Center: Aluminum core

Drawings are for reference only and may differ from the product



Picture may differ from original product

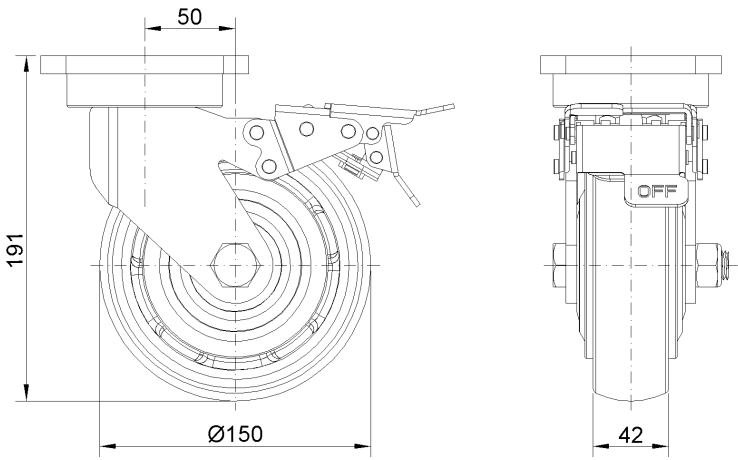
Technical Data

<input checked="" type="radio"/> Metric <input type="radio"/> Imperial	
Wheel Diameter	150mm
Wheel Width	42mm
Wheel Bearing	Wheels With Ball Bearings
Plate Size	115 x 100mm
Bolt Hole Spacing	85 x 70mm
Plate Hole	20 x 11mm
Offset	50mm
Swivel Interference	356mm
Overall Height	191mm
Swivel Radius	178mm
Hardness Of Tread	92±5° Shore A
Load Capacity (Dynamic)	450kgs
Load Capacity (Static)	675kgs
Temperature	-20°C to +70°C
Fork Type	Swivel Caster With Front Brake
Stainless	N/A
Electrical Conductivity	N/A
Anti-Static	N/A
Weight	3.91kgs
Standard	ISO22883

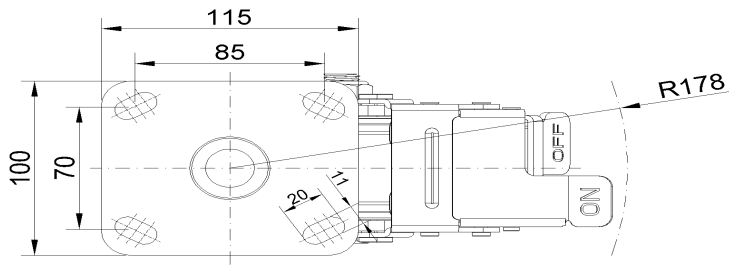
Advantages at a glance

Rolling Resistance	● ● ● ● ●
Operating Noise	● ● ● ● ●
Floor Surface Preservation	● ● ● ● ●

Dimensions



Mounting



* For any deviation between metric and imperial spec, please refer to the metric spec.