

1153 Series



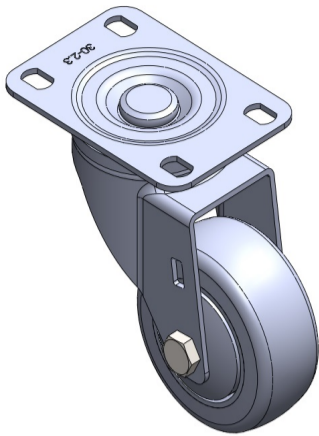
WMRC Wheel 150 x 40mm

EAN	
TW-001	KS-001
YJ-001	VN-001

Swivel caster, baseplate testing
Galvanized surface testing
Thermoplasticity testing
Wheel bearings - testing

Wheel surface: Thermoplastic (PA6)
Wheel core: Thermoplastic (PA6)

Product descriptions are for reference only. The actual product shall prevail.



Picture may differ from original product

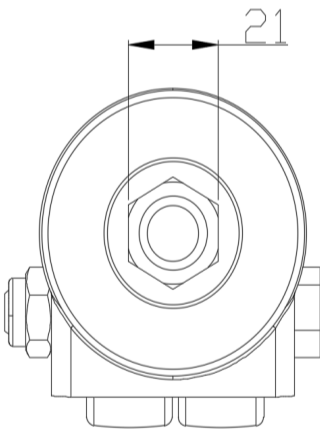
Technical Data

<input checked="" type="radio"/> Metric <input type="radio"/> Imperial	
Wheel Diameter	150mm
Wheel Width	40mm
Wheel Bearing	Wheel equipped with needle roller
Thread Specifications	1-2 " -12牙
thread length	50mm
Offset	54mm
Swivel Interference	260mm
Overall height	190mm
Swivel Radius	60mm
Hardness of tread	75±5° Shore D
Load capacity (dynamic)	100kgs
Load capacity (static)	200kgs
Temperature	-20°C to +80°C
Stand Style	activity
Stainless steel	N/A
Conductive	N/A
Anti	N/A
Weight	0.50kgs
Standard	ISO22883

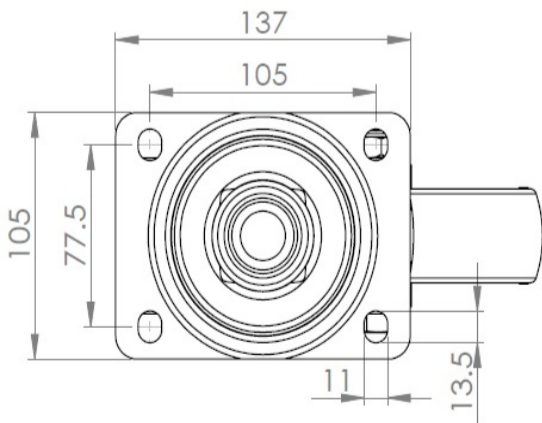
Advantages at a glance

Rolling Resistance	● ● ● ● ●
Operating Noise	● ● ○ ○ ○
Floor Surface Preservation	● ● ○ ○ ○

Dimensions



Mounting



Drawings are for reference only and may differ from the product.

* For any deviation between metric and imperial spec, please refer to the metric spec.