



1102 B Type Caster Series

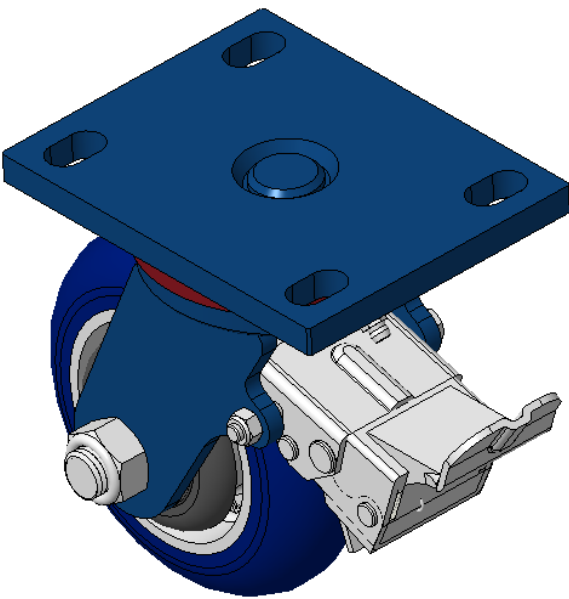
EQPU (blue) Wheel Diameter × Wheel Width 125 x 40 mm

A  
TW-11020500044071 KS-11020500554061

Casters equipped with a rear brake With locking system, Welded Caster Fork.  
Blue painted finish, Mounting Type - Top Plate, 110x75mm Bolt Hole Spacing.  
Aluminum wheel center, High-Quality, high-elasticity rubber Wheel Tread, Cast Iron blue.  
Bearings—Ball Bearings, with specially designed anti-winding wheel covers.

Wheel surface: Made of high-quality, high-elasticity rubber  
Wheel Center: Aluminum core

Drawings are for reference only and may differ from the product



Picture may differ from original product

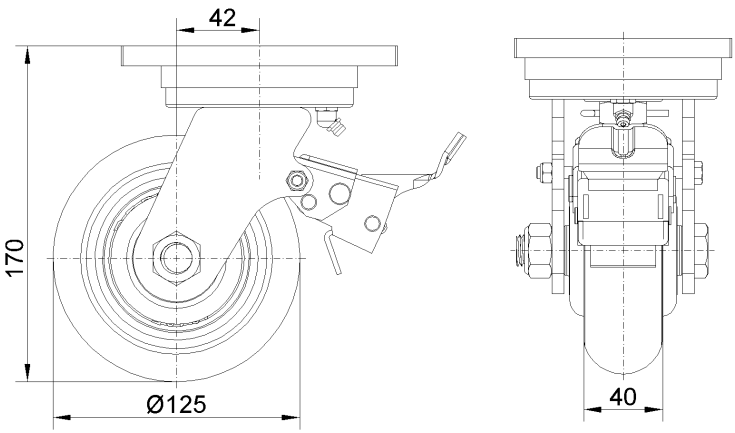
Technical Data

<input checked="" type="radio"/> Metric <input type="radio"/> Imperial	
Wheel Diameter	125mm
Wheel Width	40mm
Wheel Bearing	Wheels With Ball Bearings
Plate Size	140 x 110mm
Bolt Hole Spacing	110x75mm
Plate Hole	22 x 13mm
Offset	42mm
Swivel Interference	214mm
Overall Height	170mm
Swivel Radius	107mm
Hardness Of Tread	87±5° Shore A
Load Capacity (Dynamic)	400kgs
Load Capacity (Static)	600kgs
Temperature	-20°C to +70°C
Fork Type	Swivel Caster With Rear Brake
Stainless	N/A
Electrical Conductivity	N/A
Anti-Static	N/A
Weight	4.35kgs
Standard	ISO22883

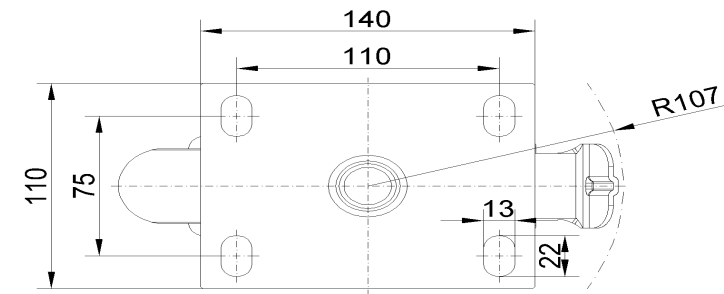
Advantages at a glance

Rolling Resistance	● ● ● ● ●
Operating Noise	● ● ● ● ●
Floor Surface Preservation	● ● ● ● ●

Dimensions



Mounting



\* For any deviation between metric and imperial spec, please refer to the metric spec.