

1121 Double Raceway, Light Duty Caster Series

PP wheel (black) Wheel diameter x wheel width 125 x 27 mm

EAN

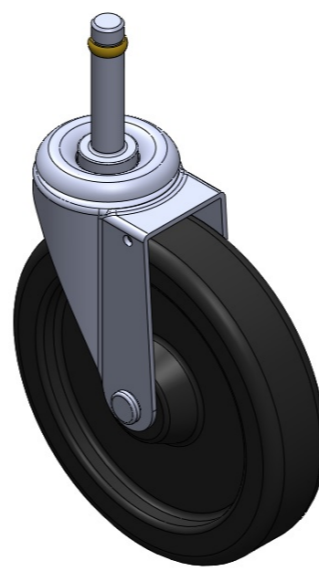
TW-112105002A009

Swivel Casters, mortise-and-tenon Stamping Fork—Ø11x51L Zine-Plated, mortise-and-tenon Mounting Type system with brass buckles Polypropylene Wheel Center and rim Black, Plain Bearings.

Wheel surface: Polypropylene

Wheel Center: Polypropylene

Drawings are for reference only and may differ from the product



Picture may differ from original product

Technical Data

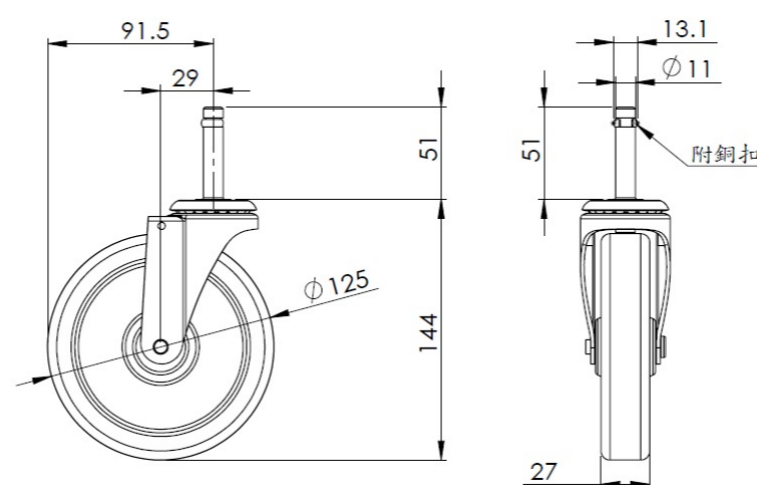
Metric Imperial

Wheel Diameter	125mm
Wheel Width	27mm
Wheel Bearing	Wheel With Plain Bearing
Stem Diameter	11mm
Stem Length	51mm
Offset	29mm
Swivel Interference	183mm
Overall Height	144mm
Swivel Radius	91.5mm
Hardness Of Tread	65±5° Shore D
Load Capacity (Dynamic)	90kgs
Load Capacity (Static)	135kgs
Temperature	-10°C to +60°C
Fork Type	Swivel Caster
Stainless	N/A
Electrical Conductivity	N/A
Anti-Static	N/A
Weight	0.63kgs
Standard	ISO22883

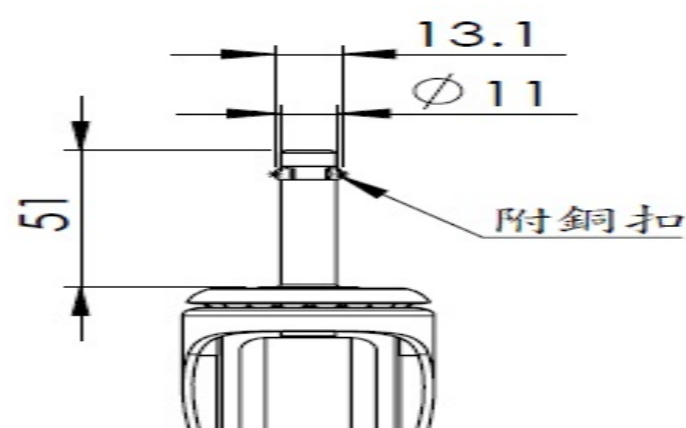
Advantages at a glance

Rolling Resistance	● ● ● ● ●
Operating Noise	● ● ● ○ ○
Floor Surface Preservation	● ● ● ○ ○

Dimensions



Mounting



* For any deviation between metric and imperial spec, please refer to the metric spec.