

1121 Double Raceway, Light Duty Caster Series

PPR wheel (pearl dark gray) Wheel diameter × wheel width 125 x 27 mm

EAN

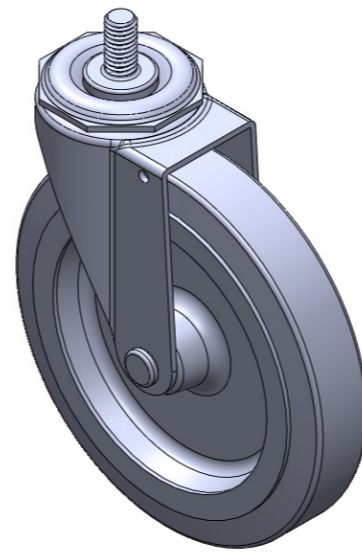
TW-112105002A010

Adjustable Casters, Threaded Stem Stamping Fork—3/8"-16 teeth Zine-Plated, Mounting Type - Threaded Stem hardware High-Quality Impact-Resistant Polypropylene Wheel Center, High-Quality Reinforced Polypropylene Rubber (TPR) Wheel Tread Pearl gray, Plain Bearings.

Wheel tread: Thermoplastic rubber elastomer (TPR)

Wheel Center: Made of high-quality impact-resistant polypropylene

Drawings are for reference only and may differ from the product



Picture may differ from original product

Technical Data

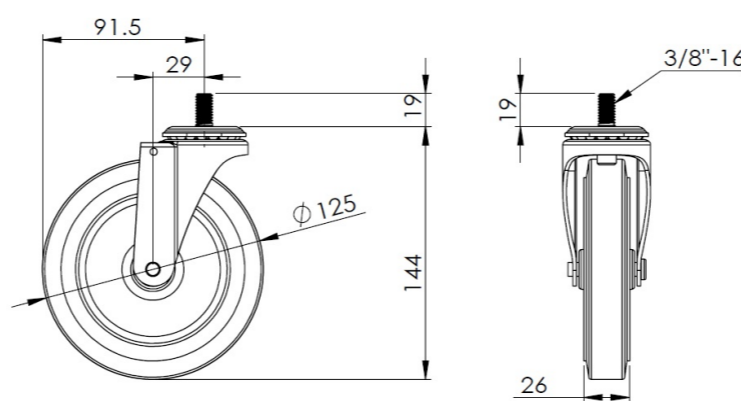
Metric Imperial

Wheel Diameter	125mm
Wheel Width	26mm
Wheel Bearing	Wheel With Plain Bearing
Threaded Stem	3/8 " -16
Threaded Length	19mm
Offset	29mm
Swivel Interference	183mm
Overall Height	144mm
Swivel Radius	91.5mm
Hardness Of Tread	82±5° Shore A
Load Capacity (Dynamic)	80kgs
Load Capacity (Static)	120kgs
Temperature	-20°C to +60°C
Fork Type	Swivel Caster
Stainless	N/A
Electrical Conductivity	N/A
Anti-Static	N/A
Weight	0.40kgs
Standard	ISO22883

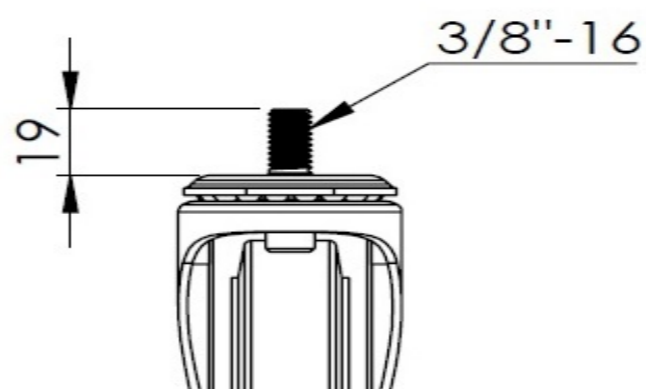
Advantages at a glance

Rolling Resistance	● ● ● ● ○
Operating Noise	● ● ● ● ○
Floor Surface Preservation	● ● ● ● ●

Dimensions



Mounting



* For any deviation between metric and imperial spec, please refer to the metric spec.