

1121 Double Raceway, Light Duty Caster Series

PPR wheel (pearl dark gray) Wheel diameter × wheel width 125 x 27 mm

EAN

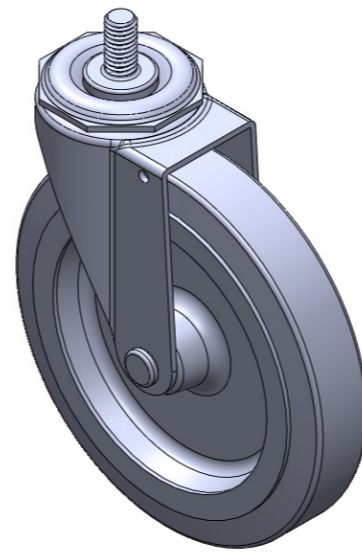
TW-112105002A010

Adjustable Casters, Threaded Stem Stamping Fork—3/8"-16 teeth Zine-Plated, Mounting Type - Threaded Stem hardware High-Quality Impact-Resistant Polypropylene Wheel Center, High-Quality Reinforced Polypropylene Rubber (TPR) Wheel Tread Pearl gray, Plain Bearings.

Wheel tread: Thermoplastic rubber elastomer (TPR)

Wheel Center: Made of high-quality impact-resistant polypropylene

Drawings are for reference only and may differ from the product



Picture may differ from original product

Technical Data

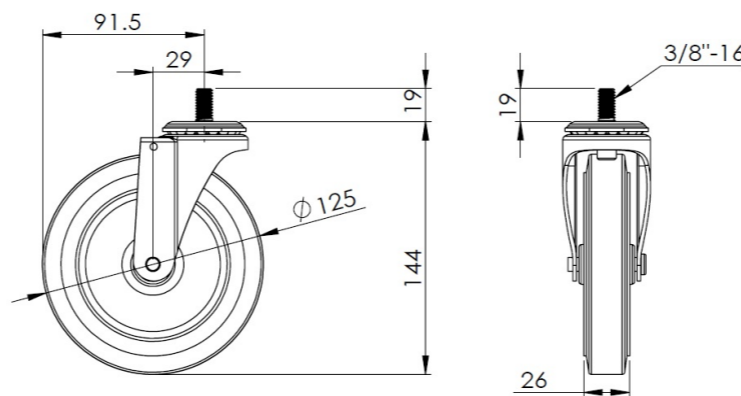
Imperial Metric

Wheel Diameter	5 "
Wheel Width	1-1/16
Wheel Bearing	Wheel With Plain Bearing
Threaded Stem	3/8 " -16
Threaded Length	3/4 "
Offset	1-3/16 "
Swivel Interference	7-5/16 "
Overall Height	5-3/4 "
Swivel Radius	3-5/8 "
Hardness Of Tread	82±5° Shore A
Load Capacity (Dynamic)	176lbs
Load Capacity (Static)	265lbs
Temperature	-4°F to +140°F
Fork Type	Swivel Caster
Stainless	N/A
Electrical Conductivity	N/A
Anti-Static	N/A
Weight	0.9lbs
Standard	ISO22883

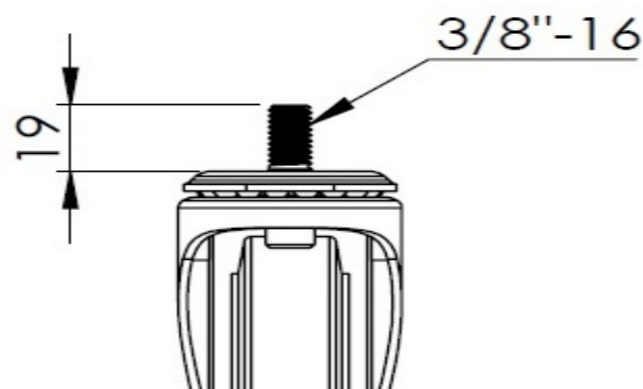
Advantages at a glance

Rolling Resistance	● ● ● ● ○
Operating Noise	● ● ● ● ○
Floor Surface Preservation	● ● ● ● ●

Dimensions



Mounting



* For any deviation between metric and imperial spec, please refer to the metric spec.